



# Conservation Activities

“

Responsible travel is not only better for our world;  
it's also more interesting and memorable.  
Responsible tourism is the future of travel”.

*Simon Reeve*

BRITISH JOURNALIST AND ADVENTURER

  
THE ROYAL PORTFOLIO  
**ROYAL MALEWANE**



---

**The Royal Portfolio Foundation** is investing in a sustainable future for Africa's people, wildlife and landscapes. Through our safari experiences, you too can have a positive environmental impact and connect meaningfully with our conservation partners. Through specially curated, hands-on conservation experiences, you can play a role in preserving habitats, protecting endangered species, and engaging with local communities.

Meet our anti-poaching team, fly with a bush pilot on an aerial patrol, assist wildlife vets in a rhino dehorning operation, learn from researchers studying endangered species, or visit a local school and join in an environmental education lesson.

By travelling with The Royal Portfolio, you're supporting a wide range of vital conservation initiatives that are being funded by our Foundation.

During your safari, you can also get more actively involved in making a difference by participating in conservation and research projects.





# CONSERVATION ACTIVITIES TO ADD TO YOUR Safari Experience

## RHINO DEHORNING

Dehorning rhinos is proving to be an effective deterrent to poachers, in combination with other security work.

Rhino dehorning is an ongoing project that requires considerable resources to be successful. By donating financially and contributing in person, you can help ensure that future generations will also get to see rhinos in the world.

*This activity must be booked in advance, as it depends on a variety of prevailing circumstances.*





---

## HELICOPTER PATROL FLIGHT

Viewing the reserve from above offers a unique perspective on the landscape and what it takes to keep the wildlife safe.

An aerial view of the Greater Kruger lets you see just how close human activity has come to the wilderness, and this puts into perspective the challenge of maintaining a balance between conservation and agriculture, and ensuring that the needs of both communities and wildlife are taken into account.

You'll fly in a small helicopter with an experienced bush pilot and our reserve warden as he counts elephant herds and checks on the safety of the rhinos and enjoy the chance to spot herds of elephant in the reserve before rising over the dramatic Drakensberg Mountains landscape and through the exquisite Blyde River Canyon.





---

## **APNR GROUND-HORNBILL PROJECT**

### FOUNDATION PROJECT

The Ground-Hornbill Project (GHP) has been conducting vital research and conservation work on these remarkable birds in the Greater Kruger for over 20 years. Known as the Thunderbird because of its unmistakable booming call, these large black birds are highly endangered due to habitat loss and the very slow rate at which they breed. . The increase in population of ground-hornbills in the Greater Kruger is directly attributable to the crucial research conducted by the GHP.

At Royal Malewane, you can learn more about this fascinating species and join experts as they visit active nests to monitor the eggs and nestlings. You can also request an informative talk by project leaders & researchers Kyle Middleton and Carrie Hickman.





---

## ELEPHANTS ALIVE

Elephants Alive, under the leadership of Dr Michelle Henley, has been monitoring, researching, and conserving elephants in the Greater Kruger for almost 30 years. The project has evolved over time and now operates across international borders where elephant corridors extend from the Kruger into Mozambique and Zimbabwe. Understanding and managing elephant distribution is vital to maintaining the balance of the Greater Kruger ecosystem.

Using special telemetry collars, Elephants Alive documents social interactions and vocal communications, and seeks to understand genetic relationships between bull elephants.

During your stay, you can join the amazing Elephants Alive team as they track down specific elephant bulls and work with vets and pilots to carefully dart and sedate the animal in order to fit the telemetry collars that capture vital data.

*This activity must also be booked in advance.*





---

## K9 UNIT DEMONSTRATION

The counter-poaching dog unit at Royal Malewane, known as Tango K9, comprises Field Rangers and highly trained detection and tracker dogs. The Rangers are trained in dog handling and have bonded with the dogs to form an extremely effective counter-poaching team.

The remarkable capabilities of the K9 Unit dogs far exceed human technology and have helped to dramatically reduce incident response times. As the reputation of the K9 Unit has spread, the number of incursions into the reserve has dropped significantly. Patrols, snare sweeps, preventative maintenance of the reserve boundaries and community education work are all helping to limit the impact of poaching.

You can now book a demonstration with these incredible working dogs and their adept handlers, witness a training exercise and see how the unique relationship between dogs and handlers is proving to be a powerful force for good.





---

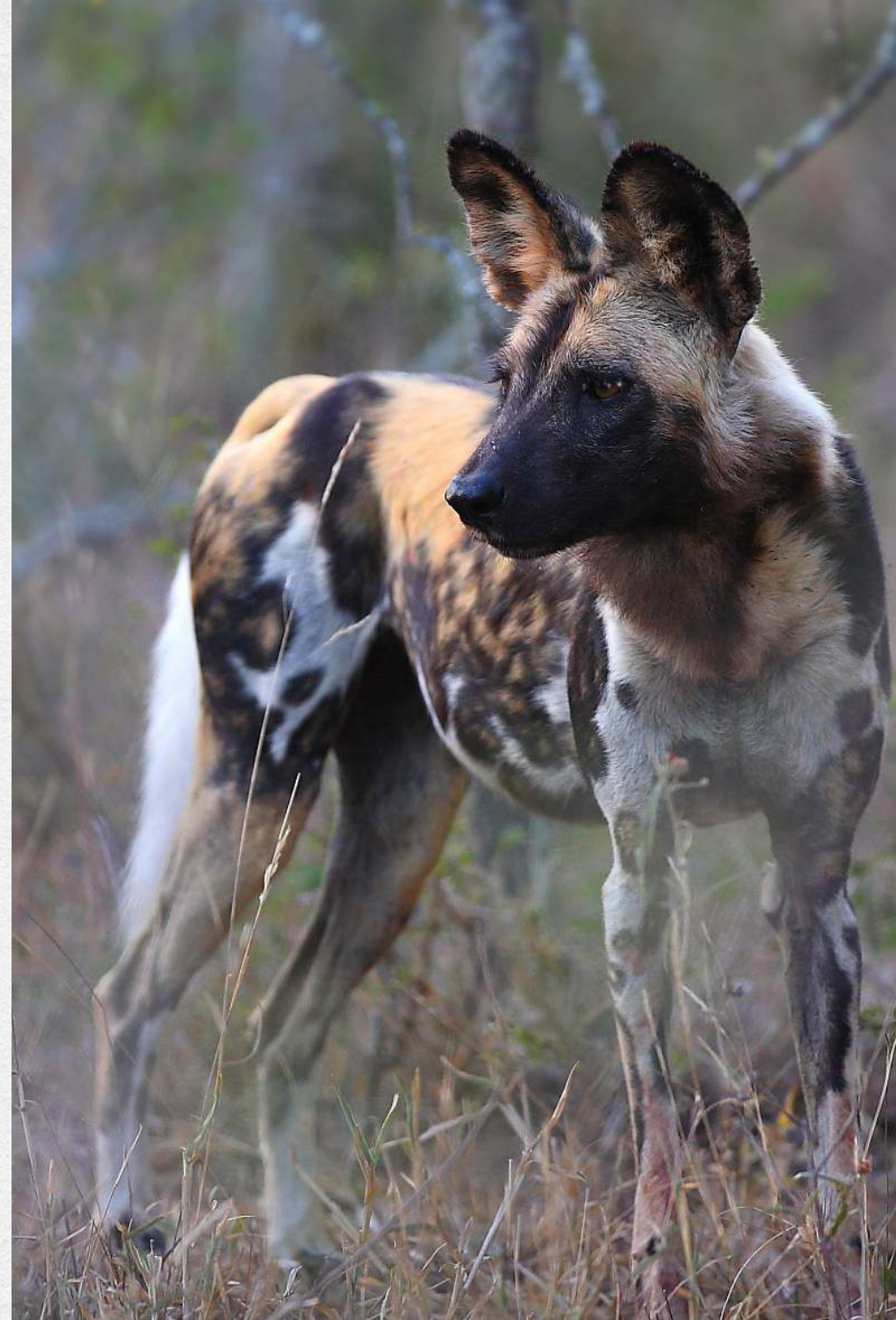
## EWТ WILD DOG CONSERVATION FOUNDATION PROJECT

African wild dogs are amongst the most successful predators in Africa. They are also highly endangered – only 5,500 free-ranging dogs remain on the continent, according to an estimate by The Endangered Wildlife Trust (EWT). Greater Kruger remains a stronghold for the “painted wolves”, largely thanks to the dedicated work of the EWT wild dog conservation project headed up by Grant Beverley.

Project scientists are able to follow the movements of the free-roaming Kruger wild dogs and capture vital information that promotes understanding and helps keep them safe from threats resulting from human-wildlife conflict.

As a Royal Malewane guest, you have the unique opportunity to meet Grant and learn about these fascinating animals. You may also be able to join him in the field as he locates the pack, fits a new collar, or gathers data.

*Pre-booking for this activity is essential as it depends on circumstances and availability.*





By participating in these exciting, eye-opening, and deeply impactful activities, you can combine your passion for Africa with ours, and make a real and lasting difference.



THE ROYAL PORTFOLIO  
**ROYAL MALEWANE**

---

We look forward to welcoming you!

**RESERVATIONS**

+27 (0) 21 671 5502 | [reservations@trp.travel](mailto:reservations@trp.travel)

**ROYAL MALEWANE**

+27 (0) 15 793 0150 | [reception@royalmalewane.com](mailto:reception@royalmalewane.com)