



CORINTHIA

LONDON

SUITES &  
PENTHOUSES



# SUITES

*at Corinthia London*

## JUNIOR SUITE

Our lofty Junior Suite features an open plan living area, large walk-in wardrobe and secluded Juliette balcony overlooking our beautifully designed, peaceful inner courtyard.

47 M<sup>2</sup> / 505 FT<sup>2</sup>  
(AVERAGE SIZE)

[VIEW FLOOR PLAN](#)

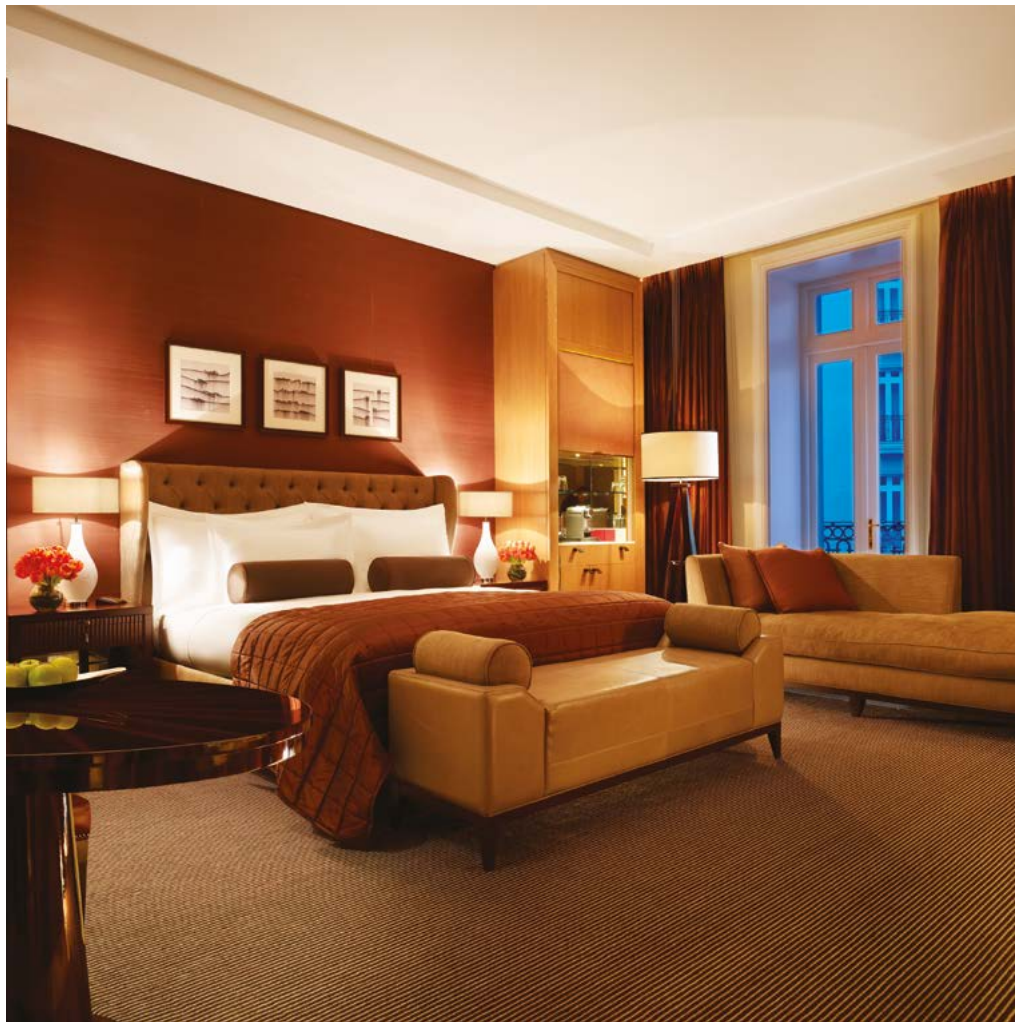


# DELUXE JUNIOR SUITE

These immaculate suites feature a vast king-sized bed and extensive walk-in wardrobe with breath taking views of the hotel's internal courtyard and a truly generous and separate living space designed to ensure maximum rest and relaxation.

62 M<sup>2</sup> / 667 FT<sup>2</sup>  
(AVERAGE SIZE)

[VIEW FLOOR PLAN](#)



# GARDEN SUITE

Designed with a nod to the quintessential British garden, our elegant Garden Suites overlook a beautiful courtyard. The light, fresh interior pays homage to modern living, and is the perfect pied-à-terre when visiting London.

65 M<sup>2</sup> / 669 FT<sup>2</sup>  
(AVERAGE SIZE)

[VIEW FLOOR PLAN](#)



# WHITEHALL SUITE

These suites feature an exceptionally comfortable king-sized bed with views sweeping over Whitehall, London's diplomatic heart. The grand living room, separate powder room and en-suite marble bathroom blend together to create a feeling of a truly unique style of living.

85 M<sup>2</sup> / 915 FT<sup>2</sup>  
(AVERAGE SIZE)

[VIEW FLOOR PLAN](#)



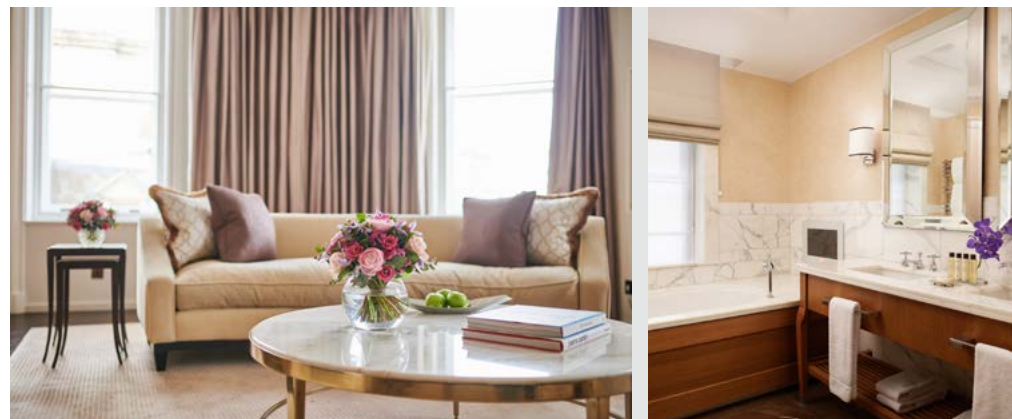
# TRAFALGAR SUITE

Boasting an ample king-sized bed and views towards the Trafalgar Square, these suites accentuate luxury and refined style.

An ideal space to entertain or just unwind and indulge in some peaceful recreation.

85 M<sup>2</sup> / 915 FT<sup>2</sup>  
(AVERAGE SIZE)

[VIEW FLOOR PLAN](#)



# LONDON SUITE

Inspired by a day in the capital, our timeless London Suites allow guests to experience the city in perfect harmony - from day to night. The bedroom offers a spacious retreat away from the whirlwind of the city, while the main area, overlooking Whitehall Place, is ideal for entertaining.

105 M<sup>2</sup> / 1130 FT<sup>2</sup>  
(AVERAGE SIZE)

[VIEW FLOOR PLAN](#)



# RIVER SUITE

Delightful in the detail and design, these expansive suites feature views of the famous Thames and its vibrant South Bank.

With a magnificent living space of plush sofas, atmospheric windows and your personal 24 hour butler, it's the perfect space to sit and watch the world go by on the river.

84 M<sup>2</sup> / 904FT<sup>2</sup>  
(AVERAGE SIZE)

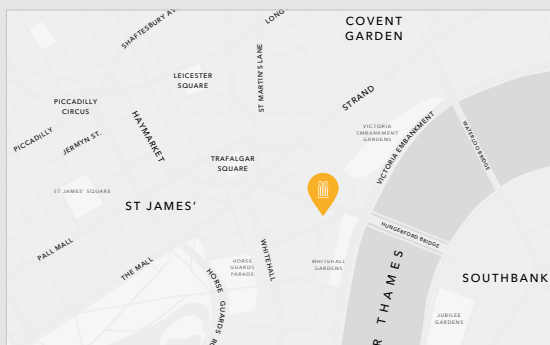
[VIEW FLOOR PLAN](#)





# SUITES

	JUNIOR	DELUXE JUNIOR	GARDEN	WHITEHALL	TRAFALGAR	LONDON	RIVER
INTERNAL SIZE (M <sup>2</sup> / FT <sup>2</sup> )	47 / 505	62 / 667	65 / 699	85 / 915	85 / 915	105 / 1130	80 / 861
CONNECTING BEDROOM		✓	✓	✓	✓	✓	✓
BUTLER SERVICE						✓	✓
POWDER ROOM				✓	✓	✓	✓
TWIN BEDS AVAILABLE			✓	✓		✓	
WALK IN WARDROBE			✓	✓		✓	
SEPARATE WORK AREA	IN LIVING AREA	IN LIVING AREA	IN LIVING AREA	IN LIVING AREA	IN LIVING AREA	✓	IN LIVING AREA
REFRIGERATED PRIVATE BAR	✓	✓	✓	✓	✓	✓	✓
NESPRESSO COFFEE MACHINE	✓	✓	✓	✓	✓	✓	✓
HIGH SPEED INTERNET ACCESS	✓	✓	✓	✓	✓	✓	✓
ACCESS TO ESPA LIFE AT CORINTHIA	✓	✓	✓	✓	✓	✓	✓
ADDITIONAL LED TV	✓	✓	✓	✓	✓	✓	✓
EN SUITE MARBLE BATHROOM	✓	✓	✓	✓	✓	✓	✓
BATH TUB WITH IN-BUILT TV	✓	✓	✓	✓	✓	✓	✓
TROPICAL RAIN SHOWER	✓	✓	✓	✓	✓	✓	✓
UNDER-FLOOR HEATING	✓	✓	✓		✓	✓	✓



## LOCATION

Overlooking the River Thames, and just minutes from Trafalgar Square, the hotel stands proudly in the very heart of the capital. With easy access to Knightsbridge and Mayfair, guests are spoilt for choice with many renowned restaurants and luxury shopping on their doorstep.

## ESPA LIFE AT CORINTHIA, A SPA REVOLUTION

A sublime city haven. ESPA Life at Corinthia is not only London's largest spa, but it is a destination for total wellbeing. It's home to an array of experts, including Dr Barbara Sturm, renowned for her non-surgical beauty treatments, and the bespoke The Elixir Clinic specialising in IV therapy. A ladies only area and in-room treatments are available.

## A DESTINATION FOR DINING

The eponymously named Kerridge's Bar & Grill is headed up by Michelin-starred chef Tom Kerridge and serves a range of traditional British dishes. Northall is home to a modern European menu with seasonal dishes and boasts executive chef André Garrett at the helm.



# PENTHOUSES

*at Corinthia London*



# THE ACTOR'S PENTHOUSE

A comfortable, creative space, designed to appeal to members of any profession. Thoroughly contemporary, with subtle reminders of Belle Époque elegance, this lavish, large-scale production is a timeless classic. Audiences will be enthralled.

100 M<sup>2</sup> / 1075 FT<sup>2</sup>  
(TOTAL SIZE)

[VIEW FLOOR PLAN](#)



# THE EXPLORER'S PENTHOUSE

Journeying to the North and South Poles or the planet's eastern and western extremities will no doubt stir the imagination. On the other hand, a relaxing stay in this penthouse will demonstrate the allure of unashamed luxury at the heart of a great city.

115 M<sup>2</sup> / 1230 FT<sup>2</sup>  
(TOTAL SIZE)

[VIEW FLOOR PLAN](#)



# THE WHITEHALL PENTHOUSE

Illustrious occupants of nearby Offices of State may well look upon The Whitehall Penthouse with a pang of jealousy. They too may inhabit heritage buildings, but most probably without this suite's contemporary blend of tradition and high-tech.

160 M<sup>2</sup> / 1745 FT<sup>2</sup>  
(TOTAL SIZE)

[VIEW FLOOR PLAN](#)



# THE WRITER'S PENTHOUSE

The sophisticated grandeur of this penthouse will give any resident much to write home about. Whether texts, tweets or long, loving letters, messages composed here will be inspired by the beauty of books.

170 M<sup>2</sup> / 1815 FT<sup>2</sup>  
(TOTAL SIZE)

[VIEW FLOOR PLAN](#)

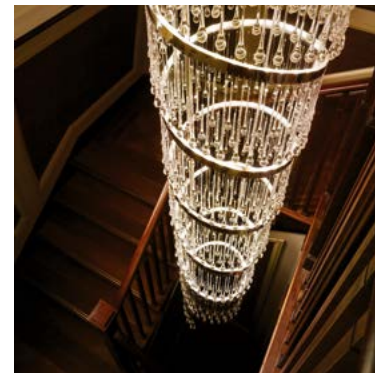
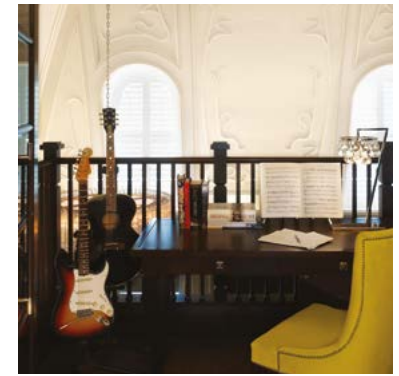


# THE MUSICIAN'S PENTHOUSE

This is the place to make music, listen to music or simply enjoy a residential environment composed with tuneful precision. The baby grand piano may be admired as an object of beauty or treated as a working instrument to accompany proceedings.

230 M<sup>2</sup> / 2475 FT<sup>2</sup>  
(TOTAL SIZE)

[VIEW FLOOR PLAN](#)

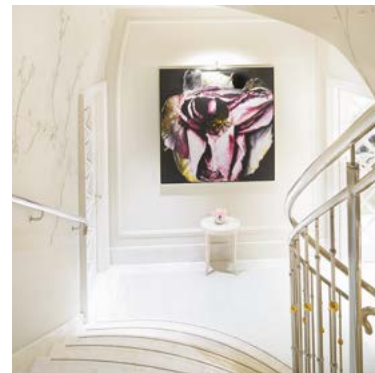


# THE HAMILTON PENTHOUSE

Here, Corinthia London shows its more gentle side. Soft, pastel shades and delicate furnishings create an environment equipped for sublime living or elegant entertaining. The ambiance is pure and fresh, taking its influence from the natural world.

205 M<sup>2</sup> / 2205 FT<sup>2</sup>  
(TOTAL SIZE)

[VIEW FLOOR PLAN](#)



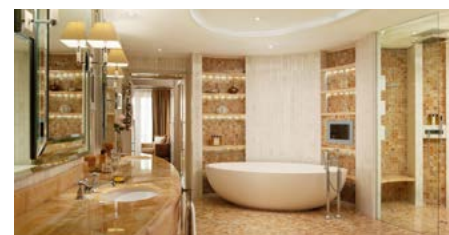
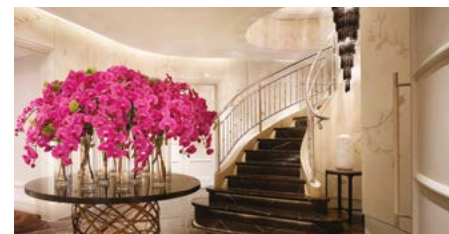


# THE ROYAL PENTHOUSE

Guests selecting the Royal Penthouse are accustomed to palatial residences, exquisite furnishings and attentive service. We are confident that this accommodation, the largest two-bedroom suite among London luxury hotels, will meet their exacting standards.

465 M<sup>2</sup> / 5000 FT<sup>2</sup>  
(TOTAL SIZE)

[VIEW FLOOR PLAN](#)



# PENTHOUSES

	THE ACTOR'S	THE EXPLORER'S	THE WHITEHALL	THE WRITER'S	THE MUSICIAN'S	THE HAMILTON	THE ROYAL
INTERNAL SIZE (M <sup>2</sup> / FT <sup>2</sup> )	96 / 1021	111 / 1187	108 / 1185	145 / 1560	145 / 1560	160 / 1721	395 / 4245
TERRACE (M <sup>2</sup> / FT <sup>2</sup> )			52 / 560	21 / 212	81 / 872	45 / 484	63 / 680
BALCONY (M <sup>2</sup> / FT <sup>2</sup> )	5 / 54	4 / 43		4 / 43	4 / 43		7 / 75
TOTAL SIZE (M <sup>2</sup> / FT <sup>2</sup> )	100 / 1075	115 / 1230	160 / 1745	170 / 1815	230 / 2475	205 / 2205	465 / 5000
INTERNAL LIFT / ELEVATOR			✓	✓	✓		✓
CONNECTING BEDROOM	✓	✓		✓	✓	✓	✓
POWDER ROOM	✓	✓	✓	✓	✓	✓	✓
BUTLER SERVICE	✓	✓	✓	✓	✓	✓	✓
BUTLER'S KITCHEN						✓	✓
STUDY			✓				✓
DOUBLE-HEIGHT LOUNGE				✓	✓		
BABY GRAND PIANO					✓		
TERRACE VITALITY BATH						✓	
DINING ROOM						✓	✓
SECOND BEDROOM							✓
SECOND BATHROOM							✓
SPA SUITE							✓



CORINTHIA

LONDON

CORINTHIA LONDON, WHITEHALL PLACE, LONDON SW1A 2BD, UK

+44 20 7930 8181 | [LONDON@CORINTHIA.COM](mailto:LONDON@CORINTHIA.COM) | [CORINTHIA.COM/LONDON](https://CORINTHIA.COM/LONDON)