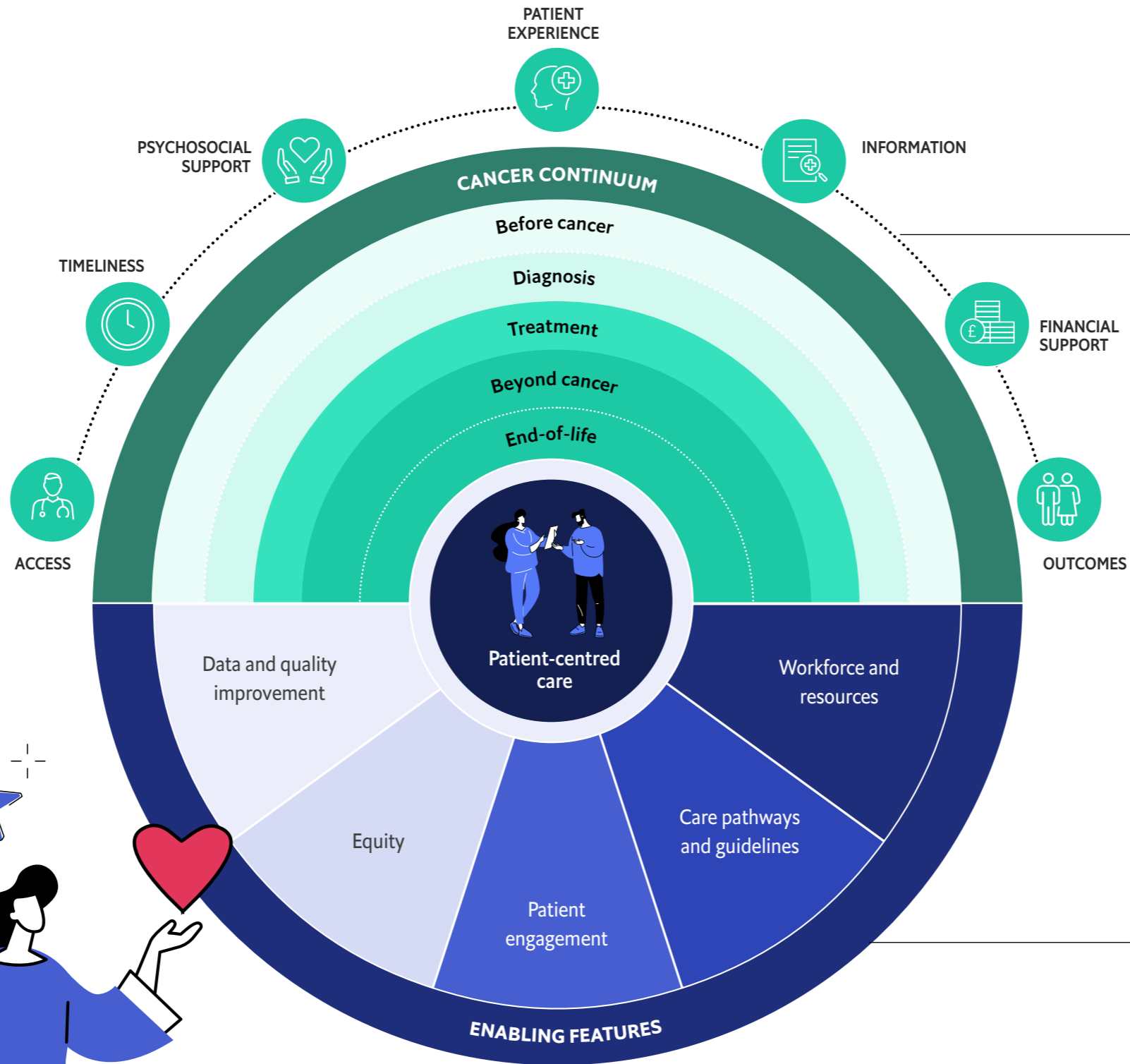


The North Star framework

Our North Star Framework aims to transform how we measure success in cancer care—shifting the focus from solely survival to survivorship—and keeping patients at the centre. The framework metrics are based on evidence from the literature and established frameworks, stakeholder perspectives on gaps in current cancer care and outcomes that are important for patients. It highlights key metrics that can be embedded in national cancer care plans and used to assess the state of holistic support across the entire cancer journey—from prevention to end-of-life.

This diagram illustrates the conceptual structure of the framework. Read more about the North Star Framework in our report, *From survival to survivorship: Shifting the focus to living well with cancer and beyond*.



ACCESS

Ensuring availability and accessibility of cancer-related services for every individual, regardless of their background

TIMELINESS

Ensuring health systems are delivering the right care at the right time to minimise disease progression and optimise patient outcomes

PSYCHOSOCIAL SUPPORT

Providing support that addresses the mental, emotional, social and spiritual needs of individuals with cancer and their families, such as counselling, support groups or education

PATIENT EXPERIENCE

Understanding patient (and caregiver) needs, preferences, wellbeing, symptoms and outcomes to ensure that cancer-related care is clinically effective, patient-centred and holistic

INFORMATION

Ensuring that clear, comprehensive, accessible and personalised information is provided to empower the public, patients and their families to understand their risks, condition and their management options, participate in decision-making, manage care and navigate services effectively

FINANCIAL SUPPORT

Providing the resources, services and support necessary to help patients and their families manage the direct and indirect costs of cancer care, ensuring that all individuals can access the care that they need without incurring financial hardship

OUTCOMES

Assessing how well healthcare and public health systems are delivering effective, population-wide cancer prevention, screening, detection and treatment

ENABLING FEATURES

These measures and concepts are important throughout the cancer continuum and are essential for building the enabling environment for successful national cancer control by ensuring high-quality, equitable, standardised and evidence-based care delivery

Sponsored by

