

The Kestrel

Freedom above the clouds.



Light. Lift. Perspective.

The Kestrel is a small yet powerful falcon known for its grace in the sky and its unmatched ability to hover mid-flight with focus and control. It's a symbol of agility, clarity, and forward momentum – perfect for those who don't just move through the world, but move with intention.

The Kestrel floor plan takes inspiration from this bird's precision and elevated perspective. Designed for those seeking freedom in both space and lifestyle, this home invites flow, light, and lift – creating a living environment that feels both grounded and free. As part of the Journey Collection, The Kestrel is for explorers at heart who still want a sanctuary to return to.



4 bedrooms

Architectural Style - Aerie Form

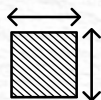


3.5 bathrooms

Designed to elevate living both literally and figuratively. This home has a strong connection to views of the canal, ponds, lake, mountains, and the prairies. The Kestrel is a multi-level home perched on a large sloping lot with a spectacular west facing orientation. Perfect for that soft afternoon light and time spent on the terraces.



3,068 ttl sqft.



47' x 144'

The bold yet refined exterior has plenty of windows and the space is bathed in natural light. Airy and effortless flow comes to mind.

The Kestrel reflects the homeowner who values simplicity, light, and intention. It's designed for those who believe beauty is found in living with clarity, and who embrace the power of creating a home with purpose.

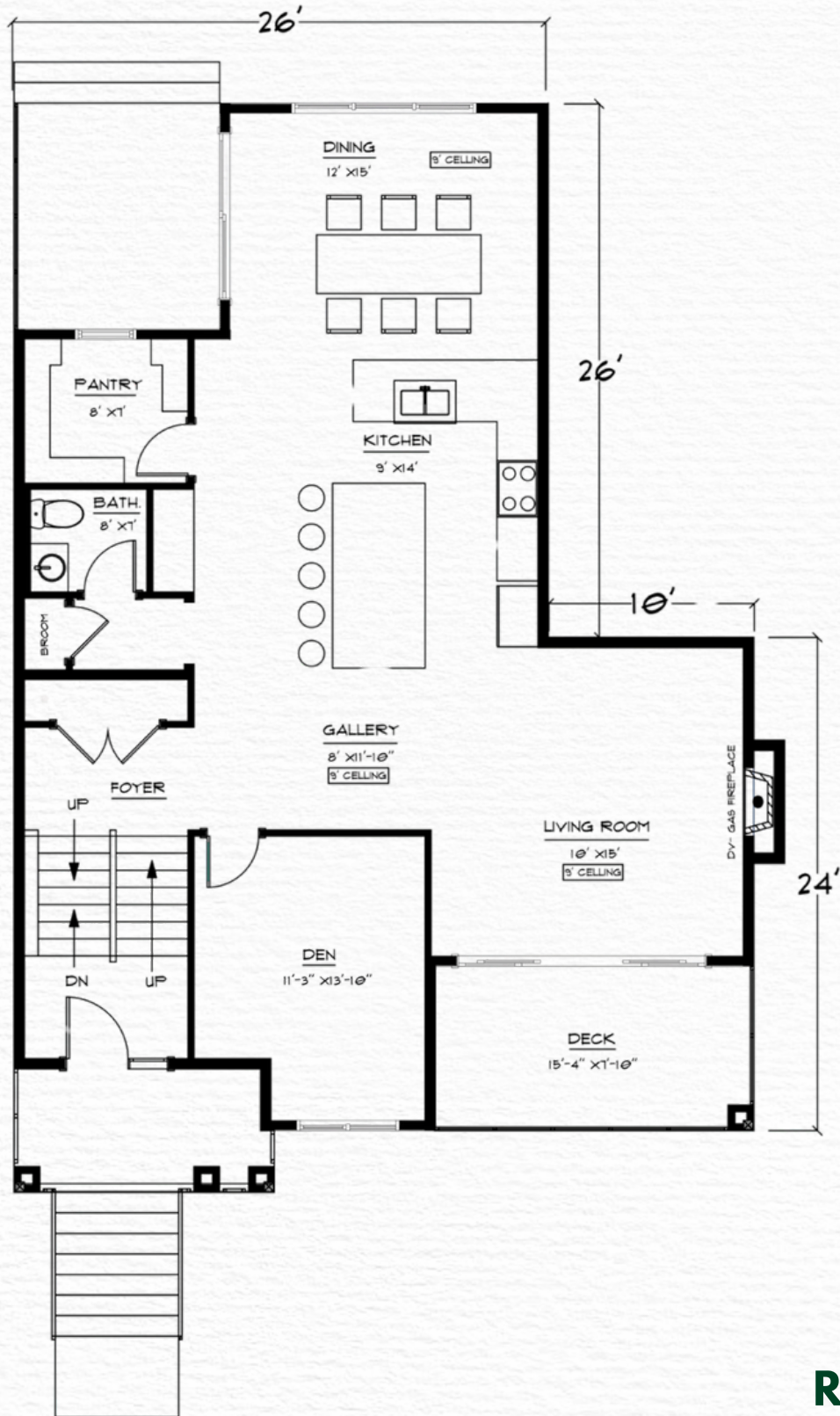
RAYN

EXTERIOR RENDERINGS

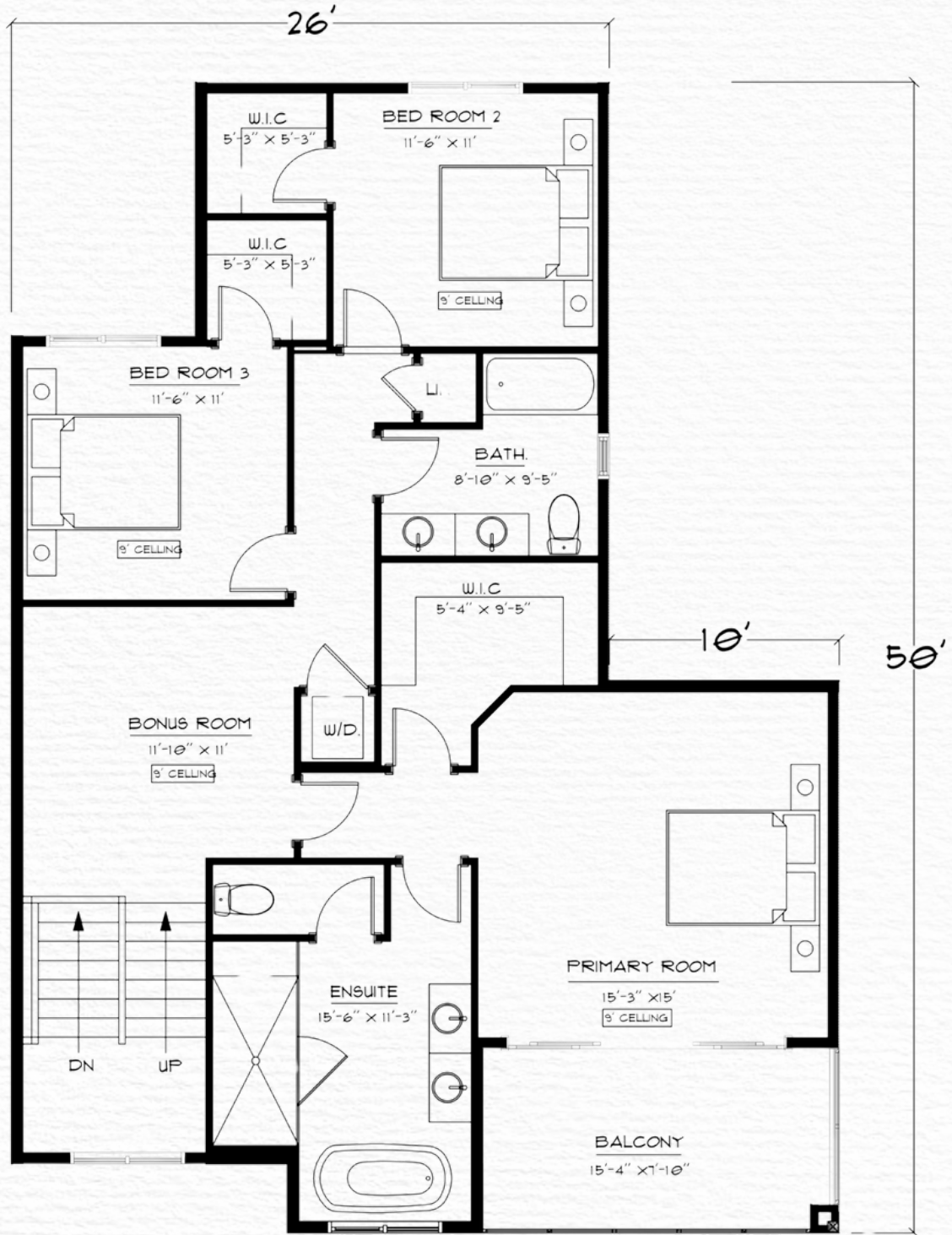


RAYN

MAIN FLOOR
1,270 SQFT



SECOND FLOOR 1,292 SQFT



LOWER FLOOR 506 SQFT

