

# The Wayfinder



Follow your own north.

Direction. Flow. Purpose.

Inspired by traditional navigators – those who read the stars, the tides, and the land – The Wayfinder is a tribute to intuition, awareness, and direction. It's about aligning the path of your life with your vision and the environment around you.

This floor plan celebrates clarity of movement, flow between spaces, and architecture that mirrors the journey inward and outward – anchored by purpose, but open to change. Whether you're redefining success, slowing down, or setting off in a new direction, The Wayfinder offers a grounded launch point.



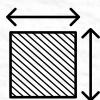
5 bedrooms



3.5 bathrooms



3,811 ttl sqft.



46' x 134'

## Architectural Style - Navi Form

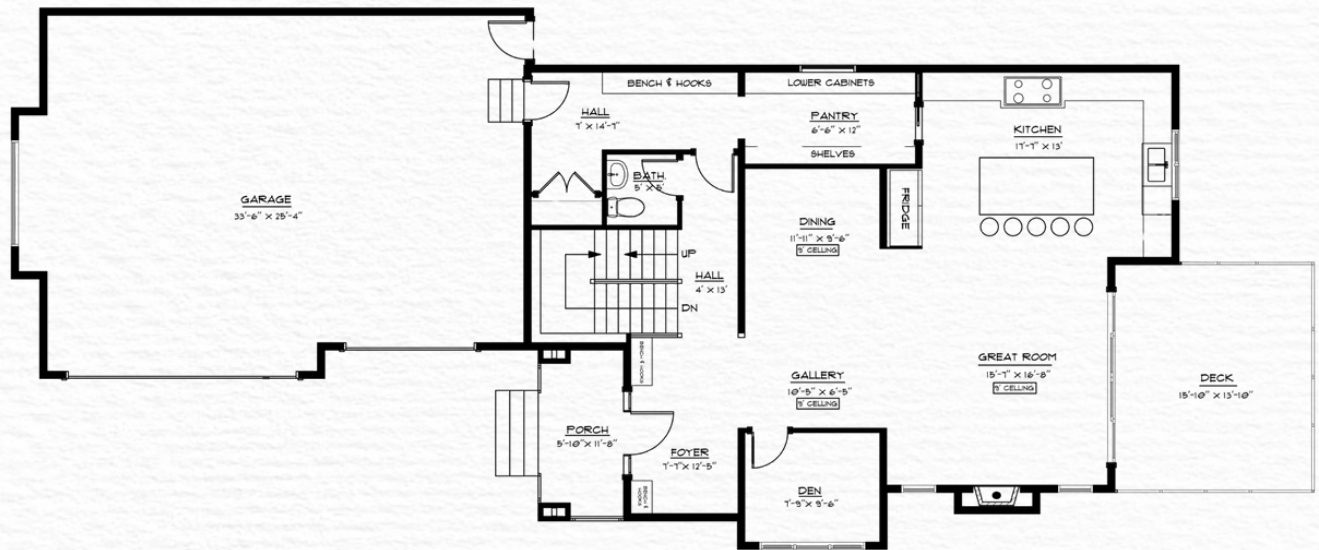
This Navi Form style is rooted in natural materials, intuitive layout, and elevated design. The Wayfinder reflects a lifestyle of purposeful exploration and modern sanctuary. It's a bold, light filled dwelling designed for seekers - those who trust their inner compass, honor exploration, and build a life rooted in discovery and direction. Clarity of movement, flow between spaces, and architecture that mirrors the journey inward and outward - anchored by purpose, but open to change.

This home is thoughtful, purposeful, and attuned to both nature and self. The walk-out basement plan allows The Wayfinder to follow it's own direction and escape into nature.

# EXTERIOR RENDERINGS

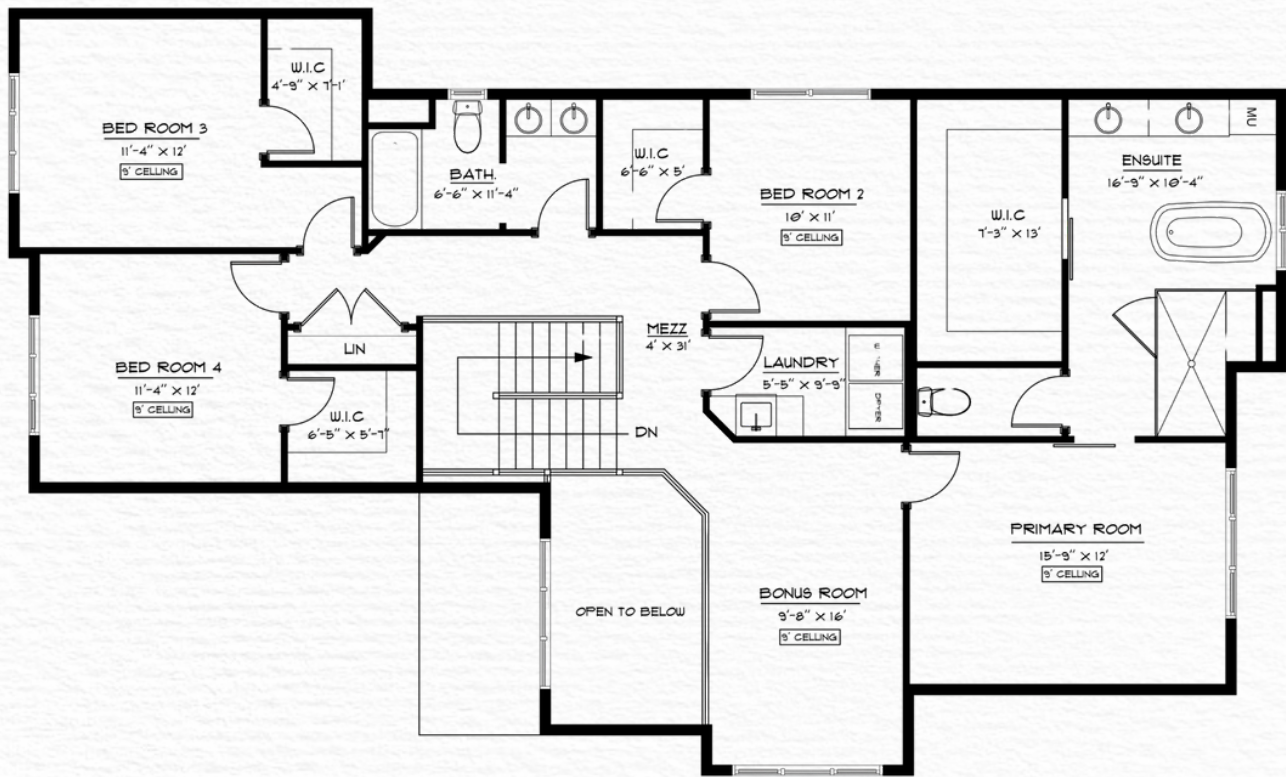


# MAIN FLOOR 1,296 SQFT



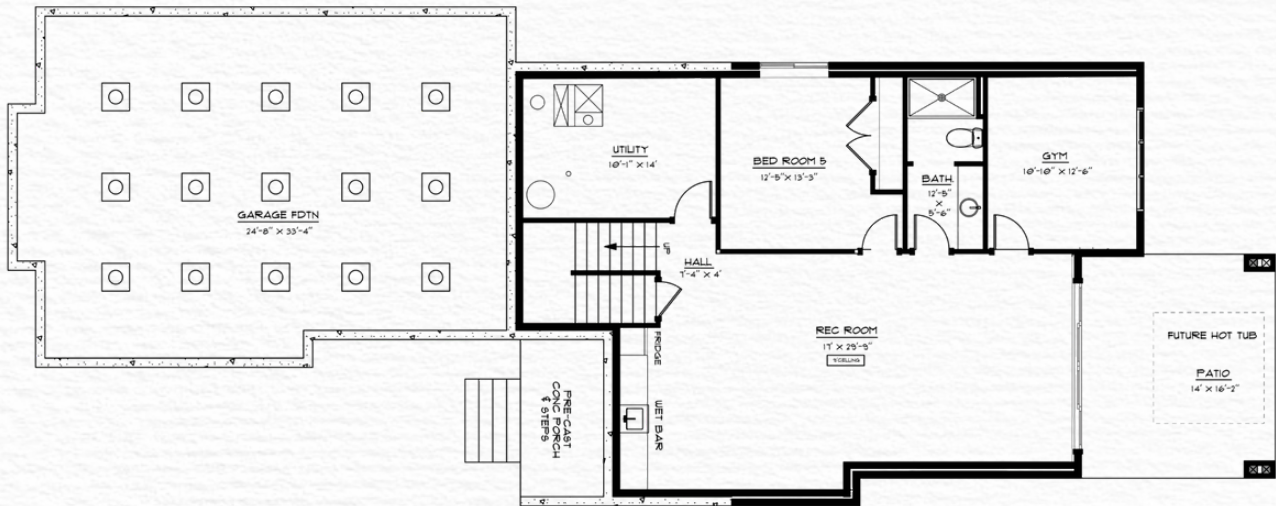
Notes:

# UPPER FLOOR 1,613 SQFT



Notes:

# LOWER FLOOR 902 SQFT



Notes: