

# Oldcastle BuildingEnvelope®

1-866-Oldcastle (653-2278) - [www.obe.com](http://www.obe.com)

## RELIANCE™-LT CURTAIN WALL 2" X 6" / ALUMINUM PRESSURE PLATE / 1" GLAZING

Elev-Reliance-LT-600

H0042-Steel-Anchor

H5001-Head-at-Vision

H5004-Sill-at-Vision

H5005-Horiz-at-Vision

H5008-Roll-Over-Horiz-at-Vision

H5009-Roll-Under-Horiz-at-Vision

H5018-Pocket-Frame-OpWin

H5019-Flat-Frame-OpWin

H5021-ShrBlk-Anchors

H5025-F-T-Mull-Anchors

H5030-Steel-Reinf

H5043-Mullion-Splice

H5044-Expansion-Horizontal

H5046-Spandrel-Options

H5048-Vision-Options

V5001-Jamb-Vertical-at-Vision

V5002-Vertical-Mullion-at-Vision

V5005-Heavy-Mullion-at-Vision

V5015-90-Outside-Corner-at-Vision-2mull

V5016-90-Outside-Corner-at-Vision

V5017-90-Inside-Corner-at-Vision-2mull

V5018-90-Inside-Corner-at-Vision

V5019-135-Outside-Corner-at-Vision

V5020-135-Inside-Corner-at-Vision

V5022-SSG-Vertical-Mullion

V5023-SSG-Vertical-w-Cap

V5027-SSG-Vertical-Mullion-.25inGlz

V5029-SSG-Vertical-Opwin

V5030-Vertical-OpWin

V5031-SSG-90-Outside-Corner-at-Vision

V5032-SSG-90-Outside-Corner-at-Spandrel

V5033-SSG-135-Outside-Corner-at-Vision

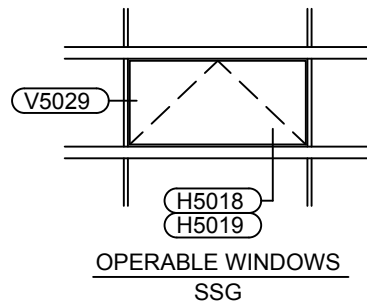
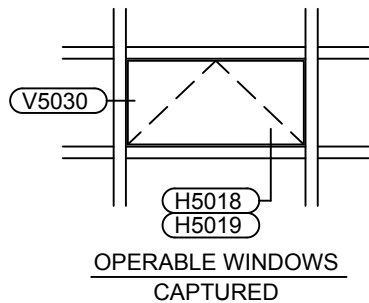
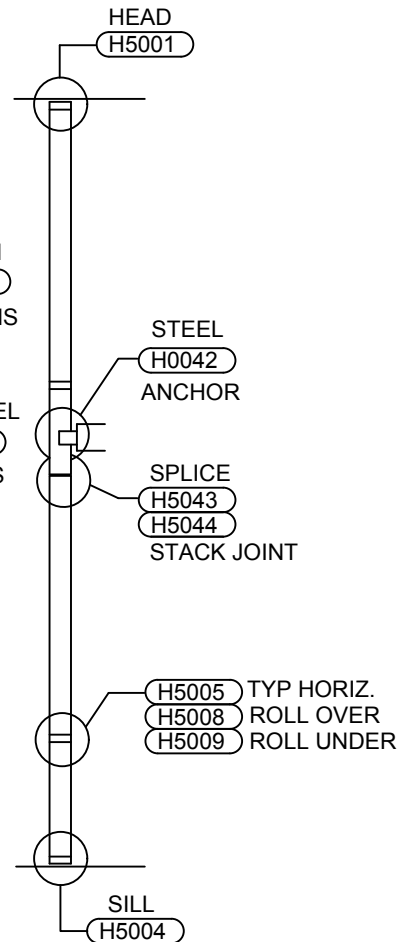
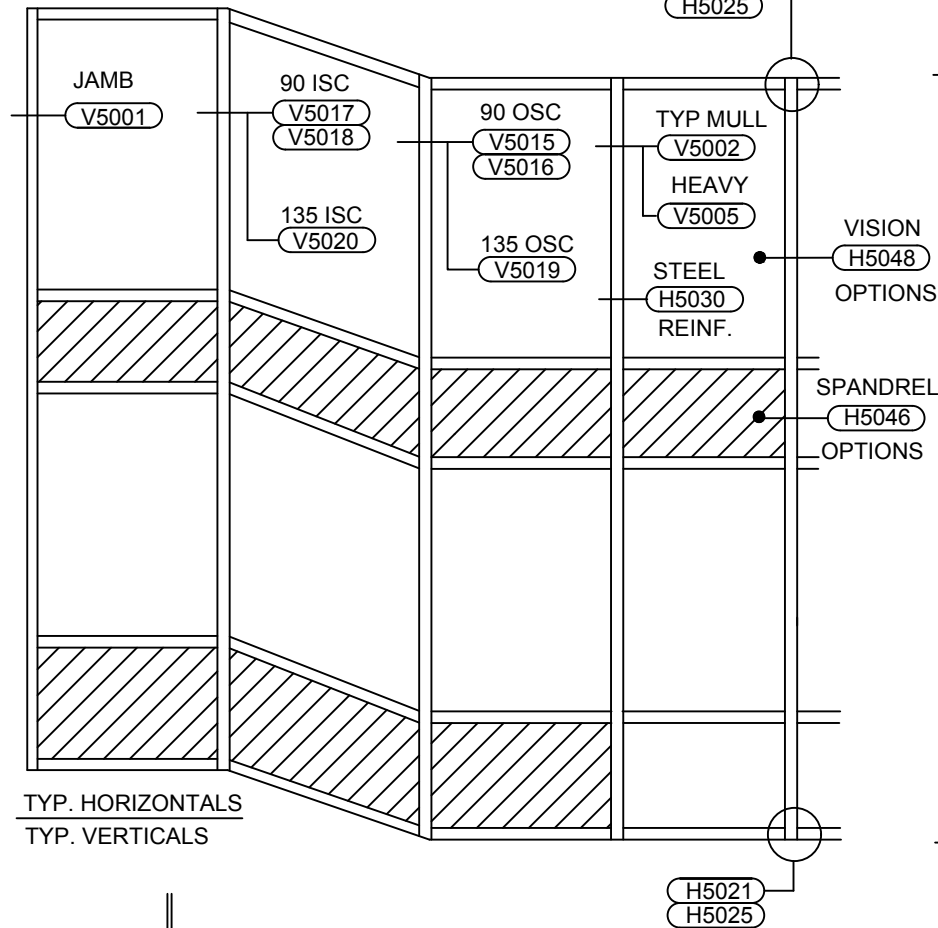
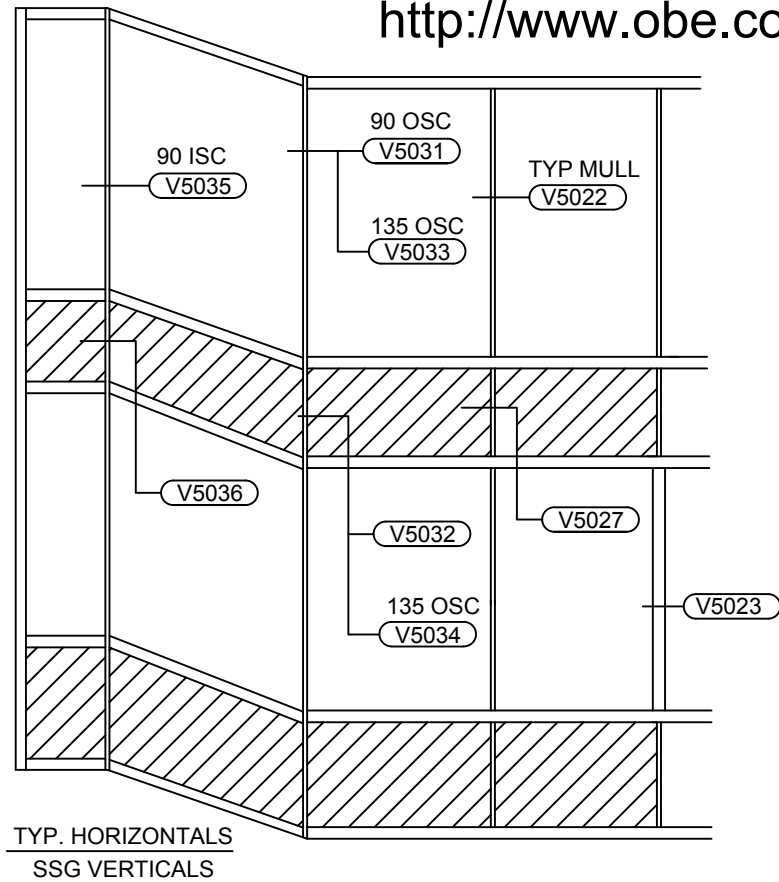
V5034-SSG-135-Outside-Corner-at-Spandrel

V5035-SSG-90-Inside-Corner-at-Vision

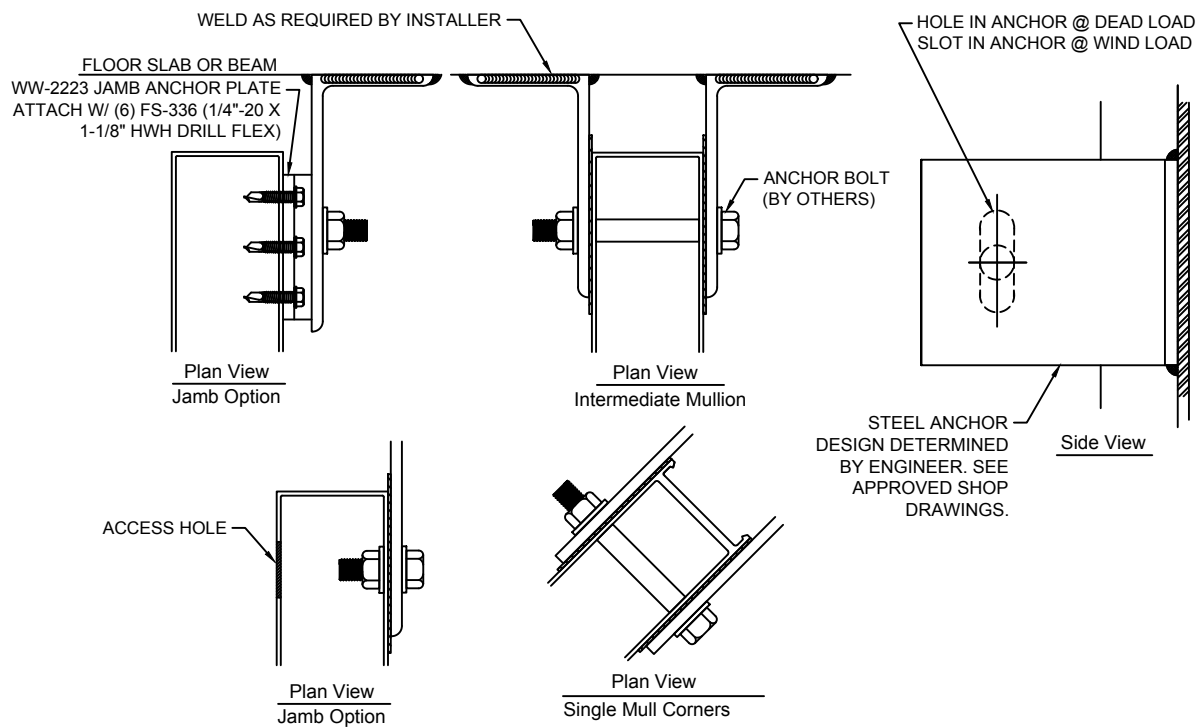
V5036-SSG-90-Inside-Corner-at-Spandrel

## Table of Contents

Note: For Door Models visit :  
<http://www.obe.com/entrances>



**MODEL: Elev-RLT-200x600**  
 RELIANCE-LT CURTAIN WALL 2" X 6" - 1" GLASS



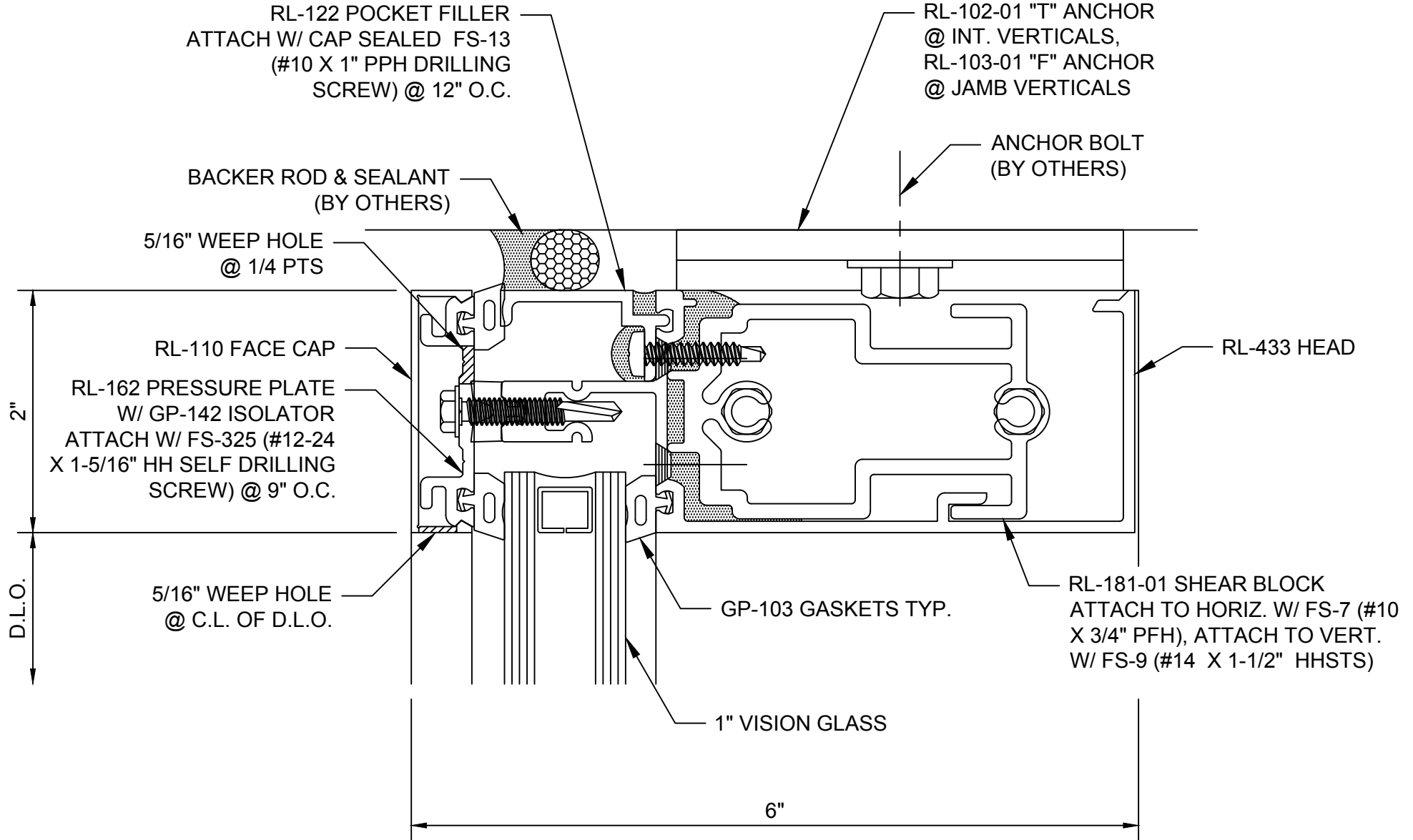
## Standard Curtain Wall Steel Anchor - H0042

September 2017

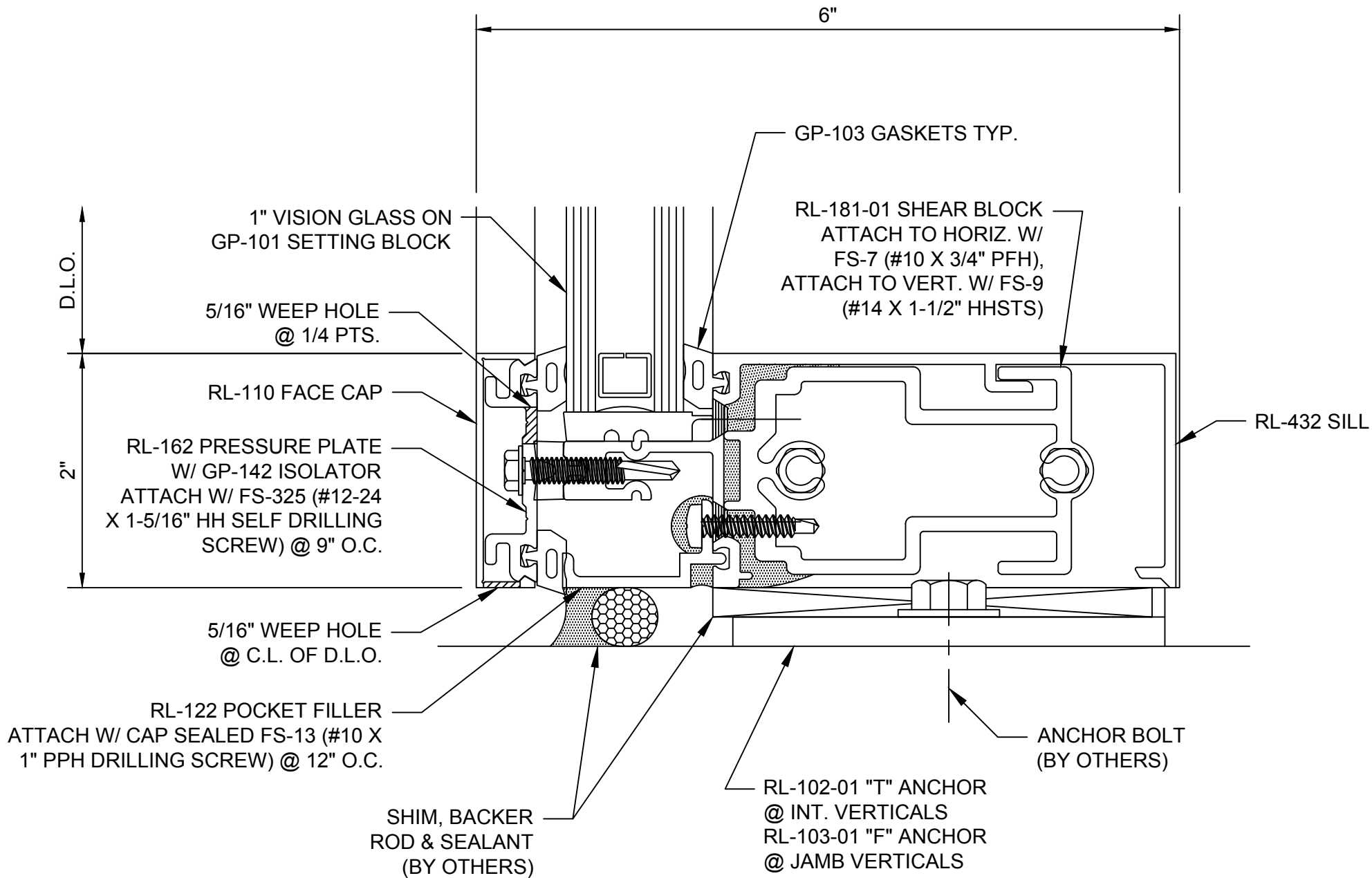
1-866-OLDCASTLE (653-2278) [www.obc.com](http://www.obc.com)

H0042-Steel-Anchor

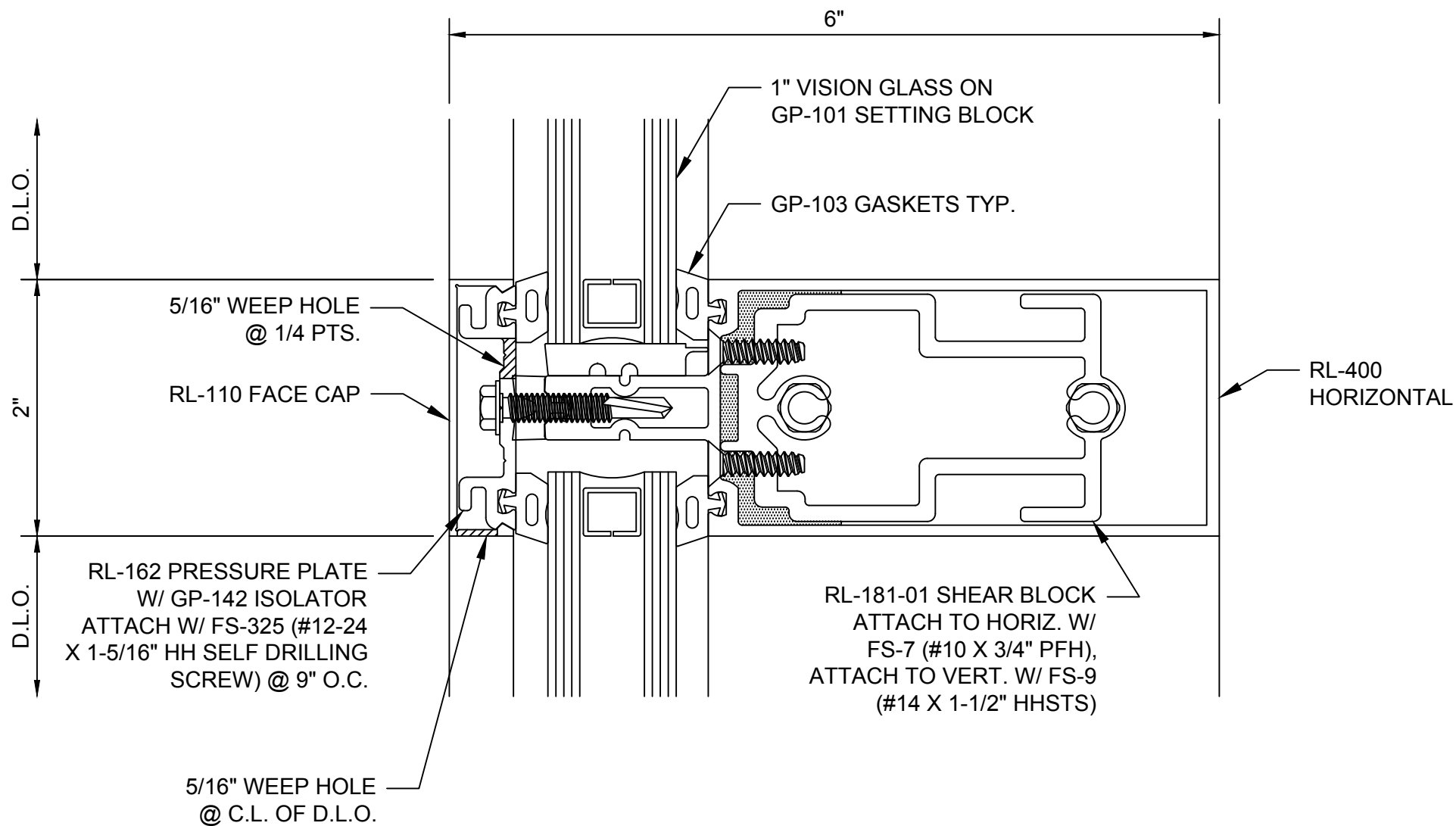




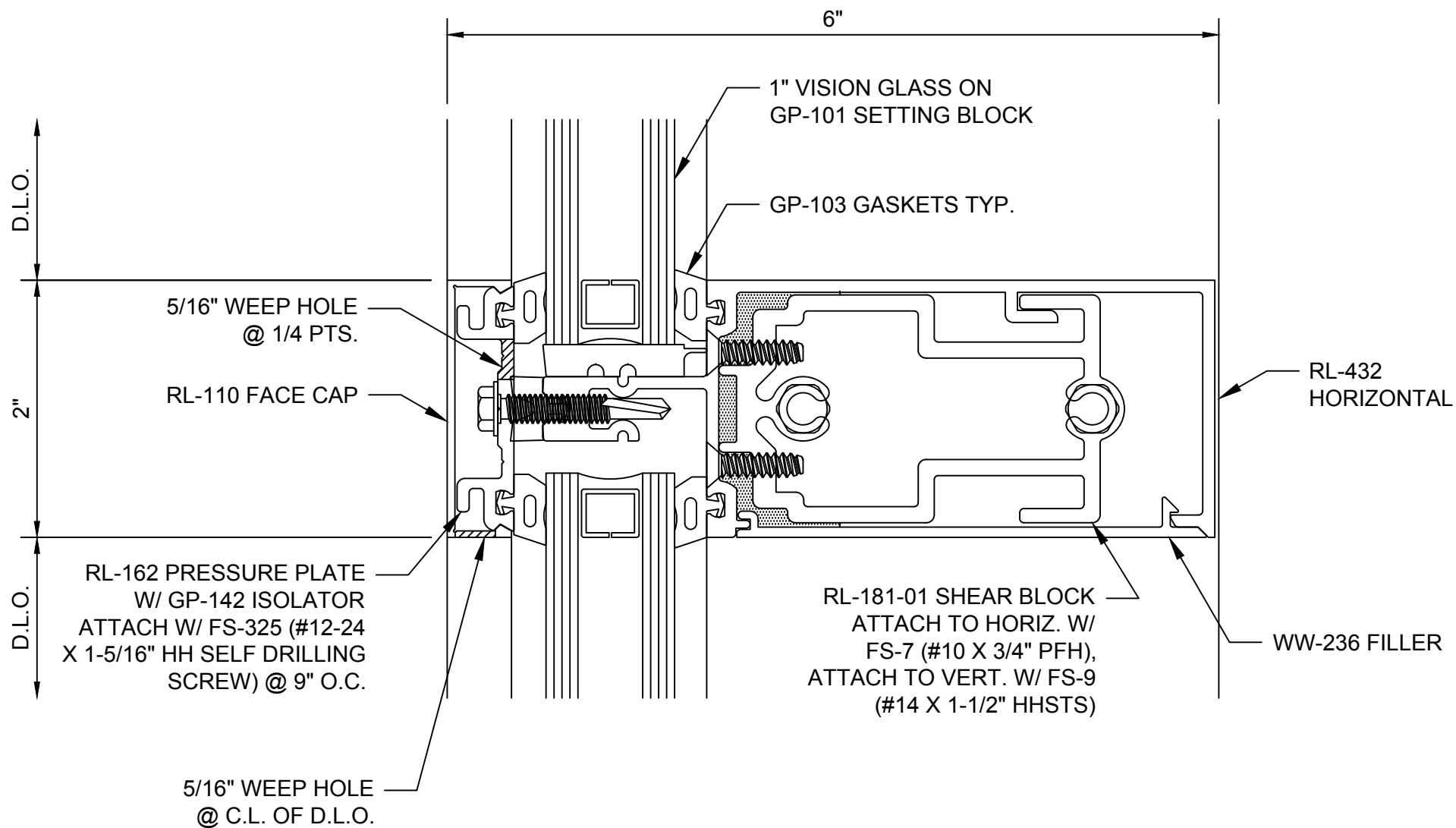
**Reliance™-LT**  
**Head at Vision - H5001**



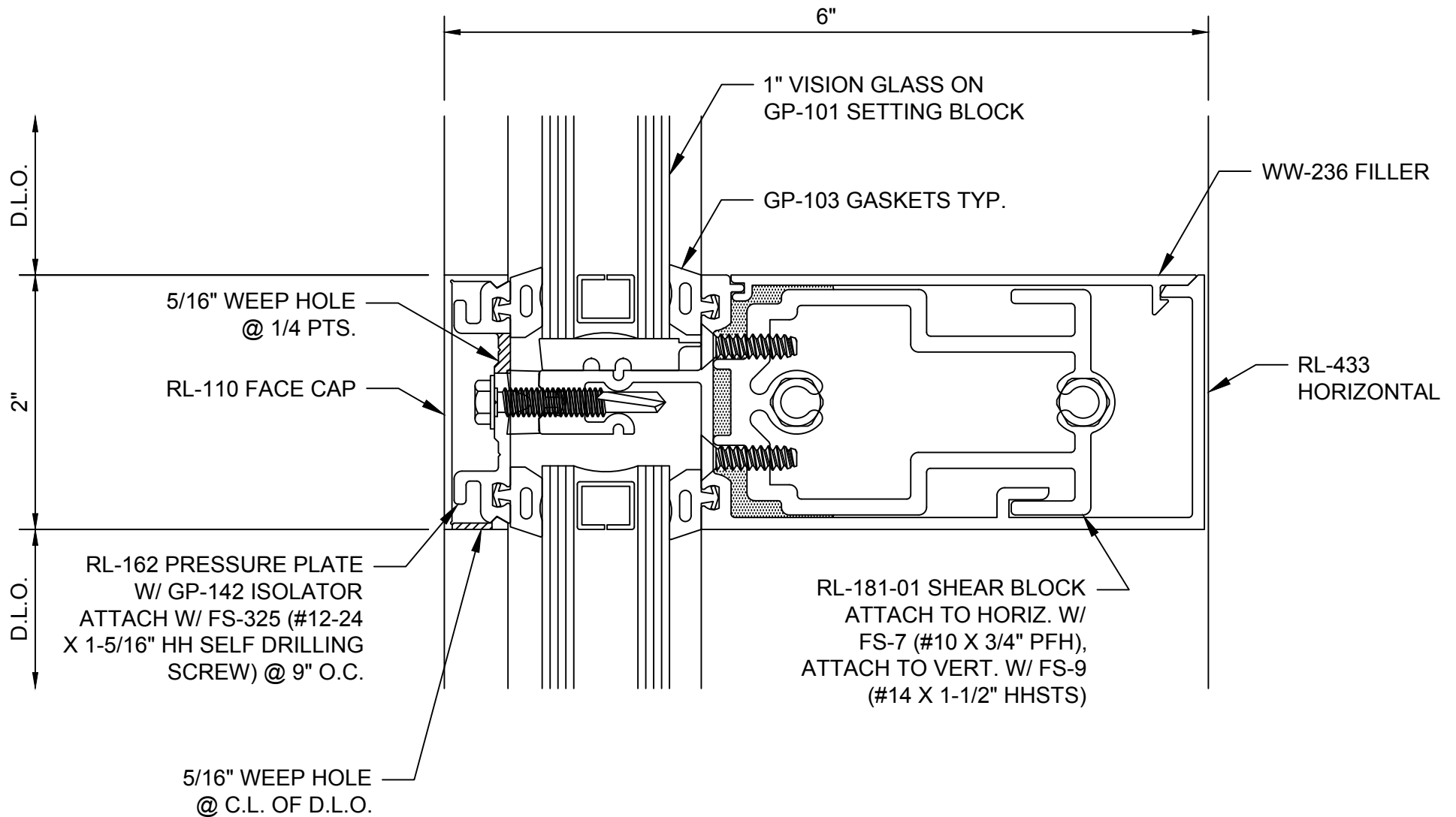
**Reliance™-LT**  
**Sill at Vision - H5004**



**Reliance™-LT**  
**Intermediate Horizontal at Vision - H5005**

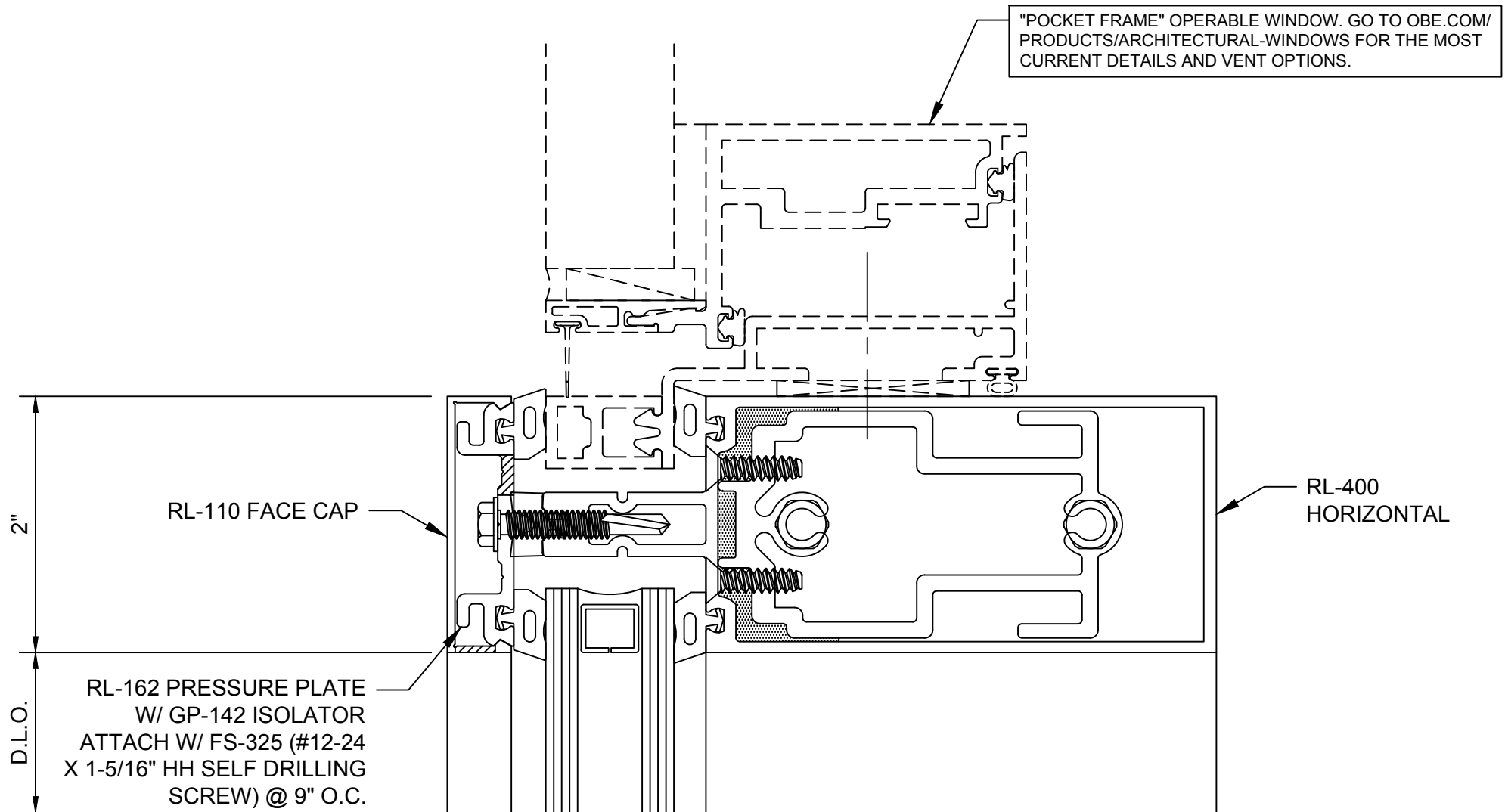


**Reliance™-LT**  
**Roll-over Horizontal at Vision - H5008**

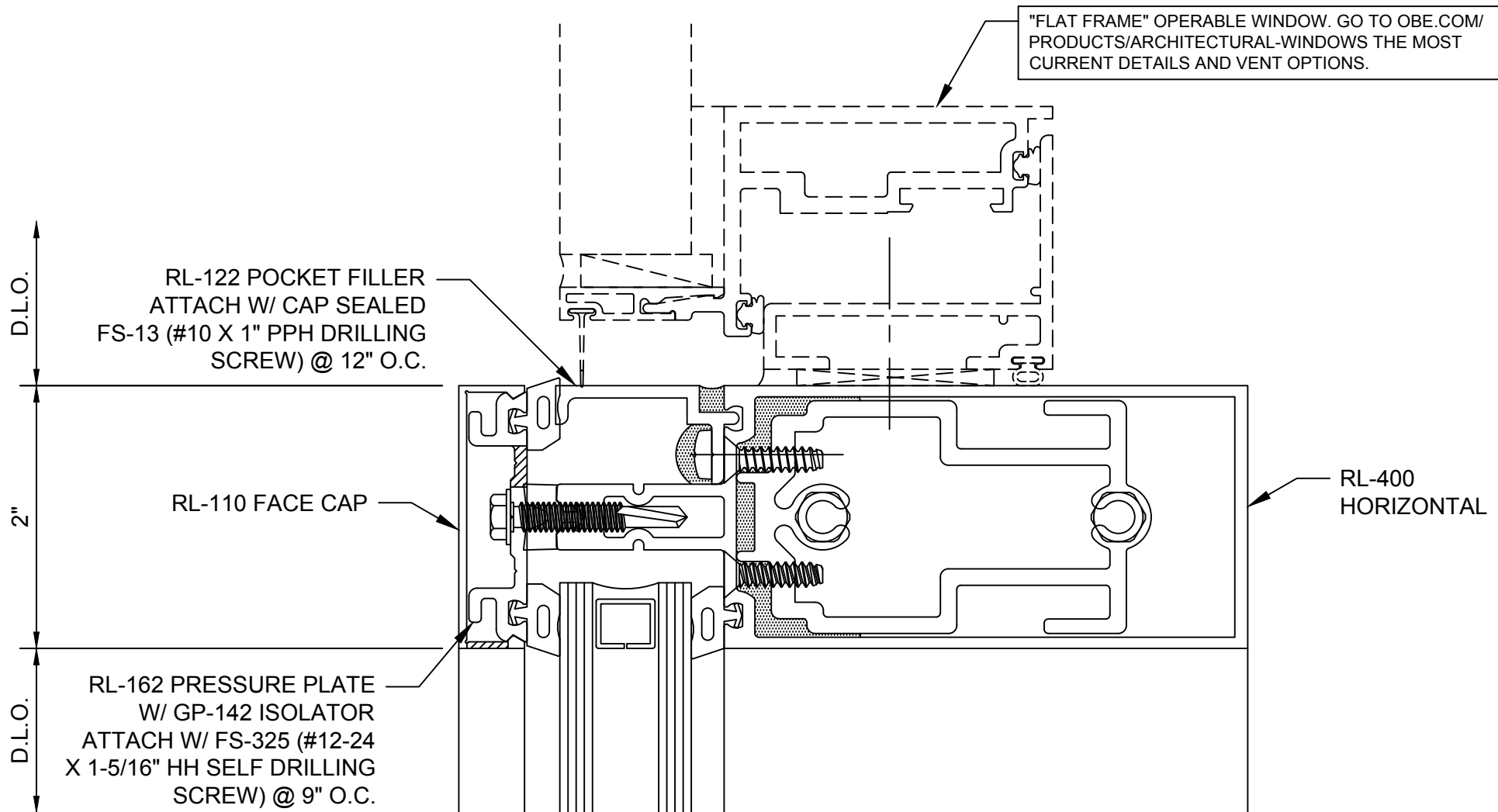


**Reliance™-LT**  
**Roll-under Horizontal at Vision - H5009**

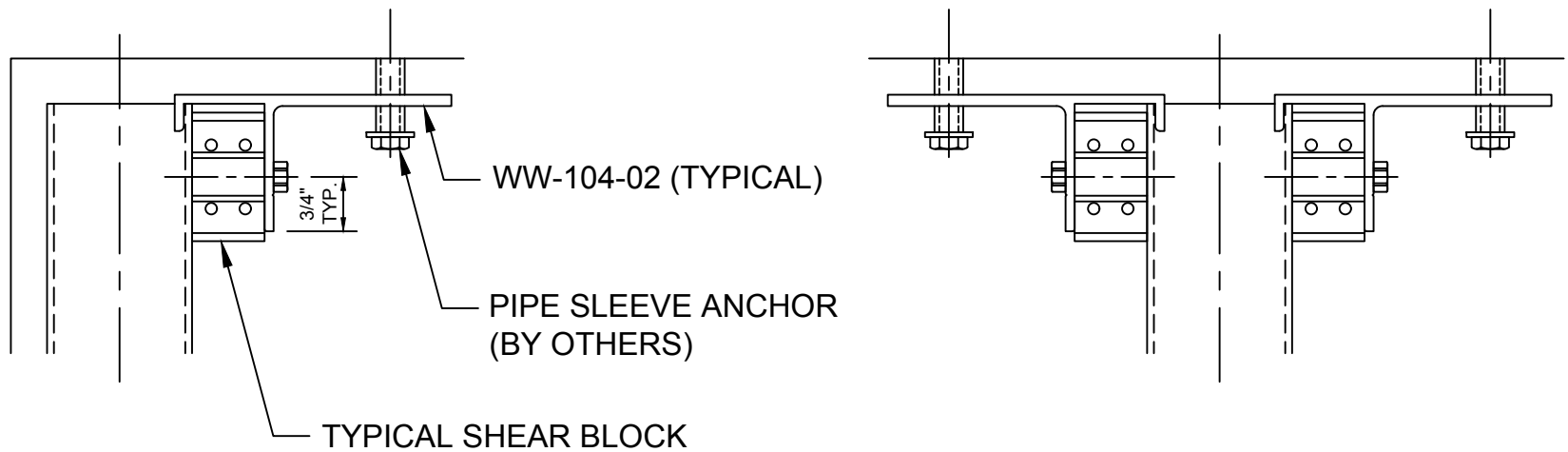




Reliance™-LT  
Horizontal at Operable Window - H5018

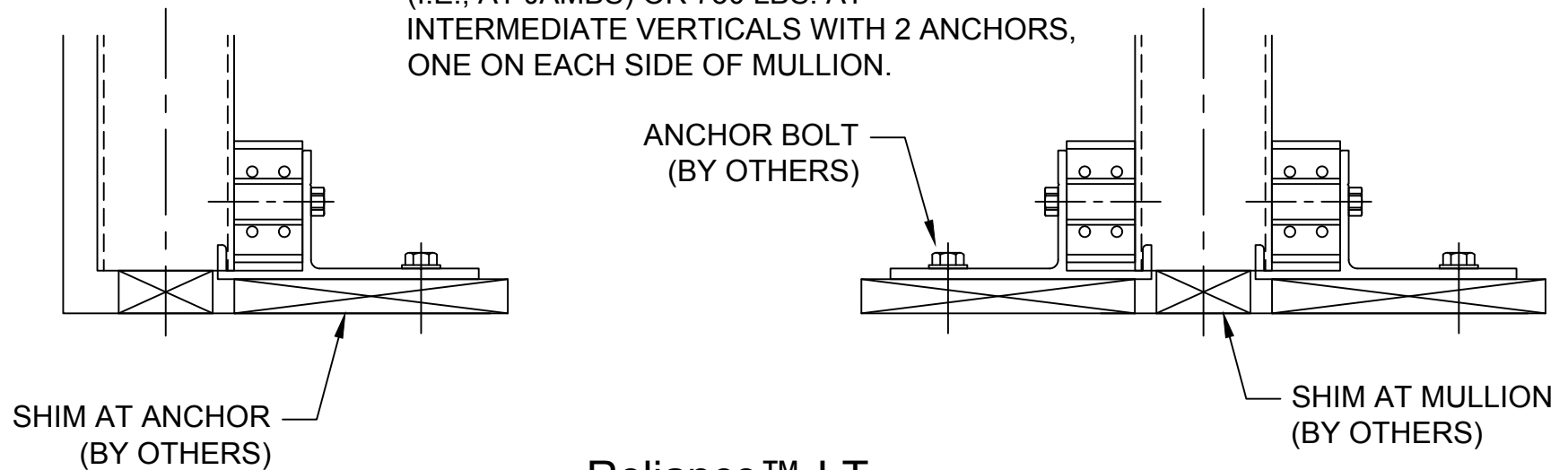


**Reliance™-LT**  
**Horizontal at Operable Window - H5019**



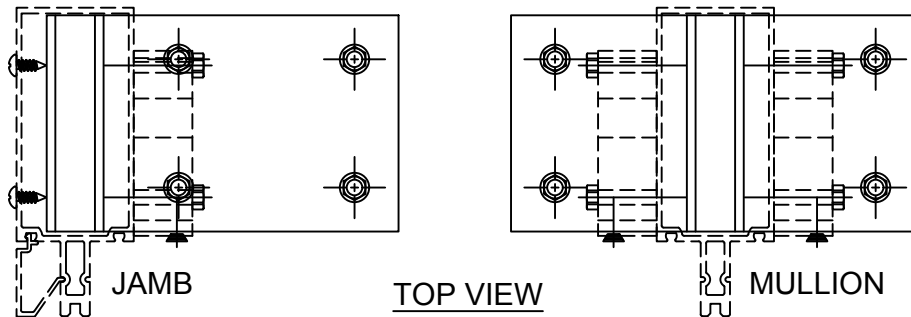
**NOTE:**

1. ANCHOR BOLT DESIGN DETERMINED BY STRUCTURAL ENGINEER
2. WW-104-02 ALUM. ANCHOR MAXIMUM END REACTION IS 375 LBS. FOR SINGLE ANCHOR (I.E., AT JAMBS) OR 750 LBS. AT INTERMEDIATE VERTICALS WITH 2 ANCHORS, ONE ON EACH SIDE OF MULLION.



**Reliance™-LT**  
**Shear Block Anchors - H5021**

## ALL STANDARD RELIANCE-LT JAMBS / MULLS

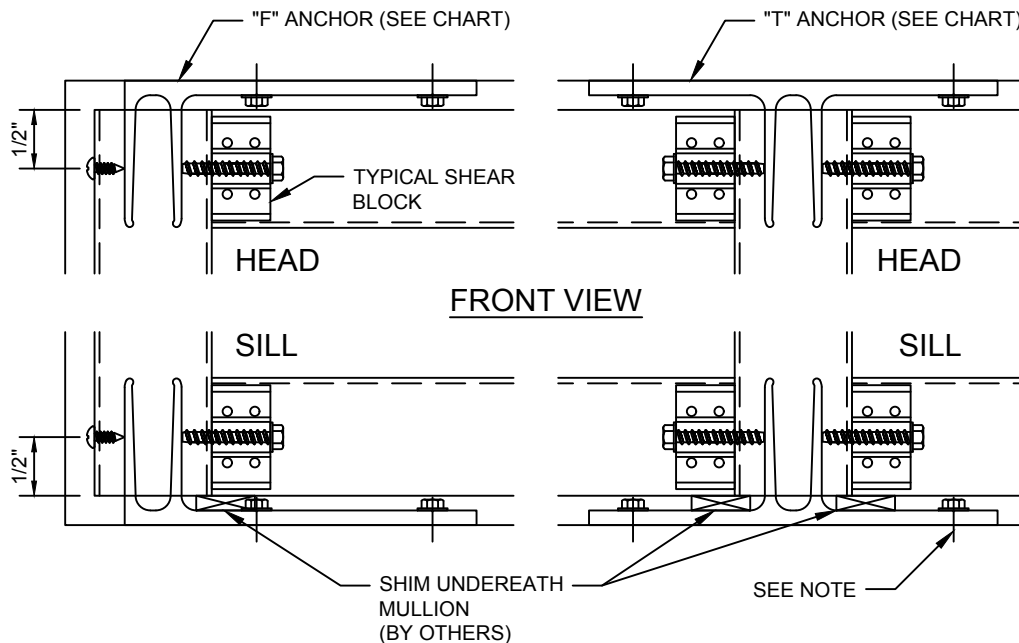


## "T" ANCHOR CHART

PART NO.	MULLION
RL-102-01	RL-400
RL-102-02	RL-500
RL-102-03	RL-404 - RL-410
RL-102-04	RL-504 - RL510

## "F" ANCHOR CHART

PART NO.	MULLION
RL-103-01	RL-400
RL-103-02	RL-500
RL-103-03	RL-404 - RL-410
RL-103-04	RL-504 - RL-510



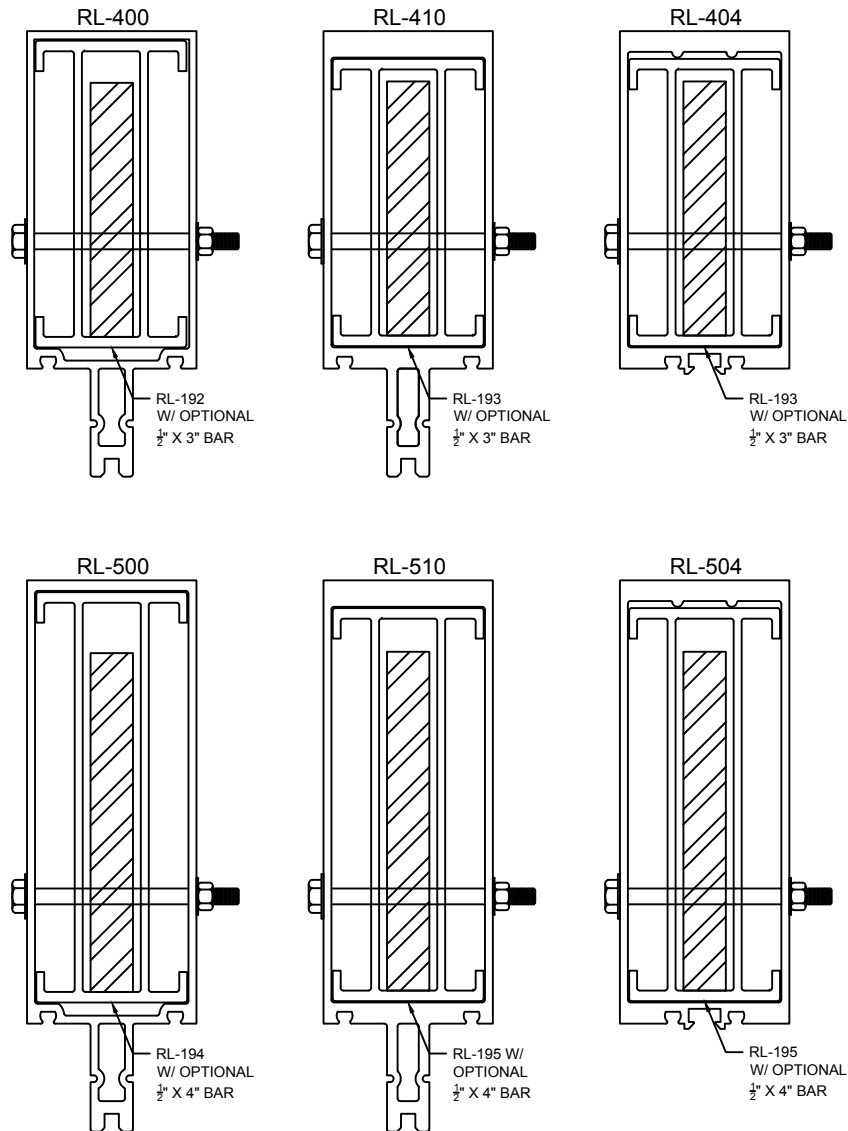
### NOTES:

1. ANCHOR BOLT SIZE, QUANTITY AND LOCATION DETERMINED BY STRUCTURAL ENGINEER
2. SCALE = 1/2 SIZE

## Reliance™-LT "F" & "T" Mullion Anchors - H5025

See approved shop dwg's for specific requirements.

Ref. installation manual for additional info.

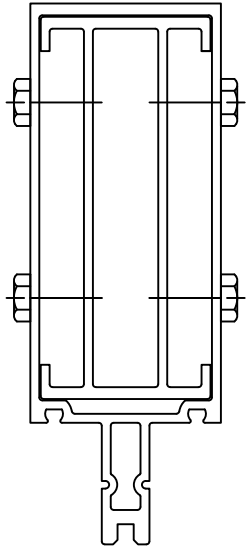


STEEL REINFORCING CHART

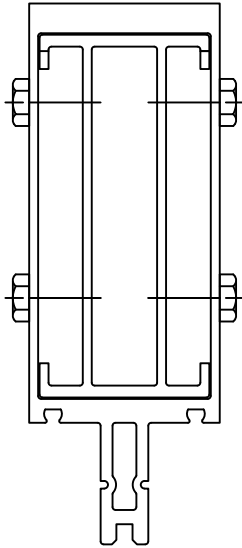
A	RL-192 Aluminum Reinforcement
B	RL-193 Aluminum Reinforcement
C	RL-194 Aluminum Reinforcement
D	RL-195 Aluminum Reinforcement
E	RL-192 w/ 1/2" x 3" Steel Bar
F	RL-193 w/ 1/2" x 3" Steel Bar
G	RL-194 w/ 1/2" x 4" Steel Bar
H	RL-195 w/ 1/2" x 4" Steel Bar

## Reliance™-LT Steel Reinforcement - H5030

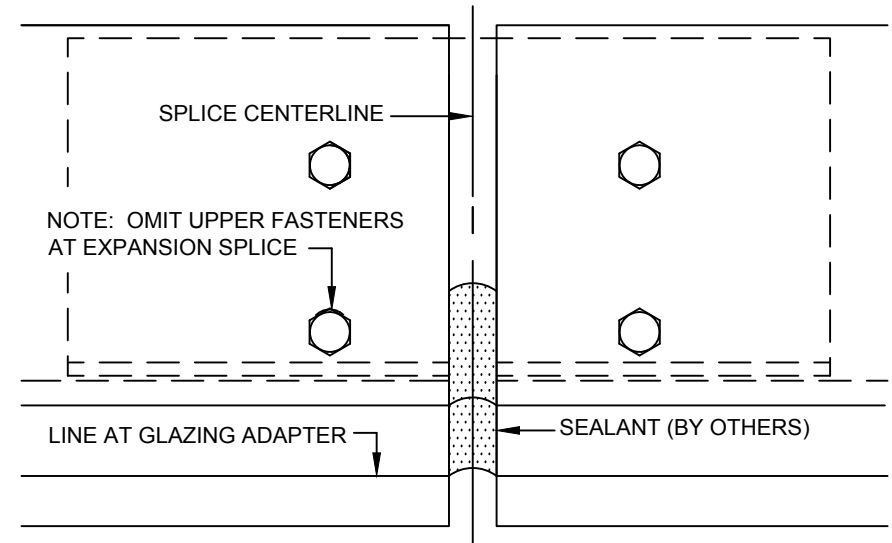
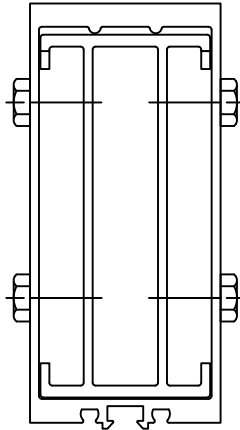
RL-400/RL-500



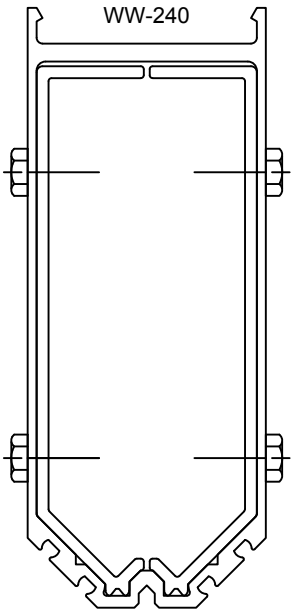
RL-410/RL-510



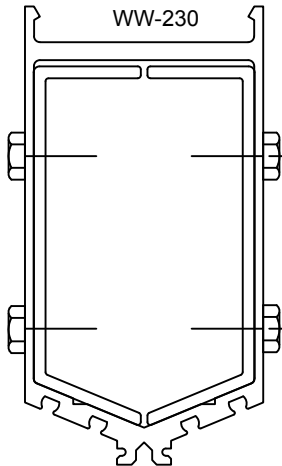
RL-404/RL-504



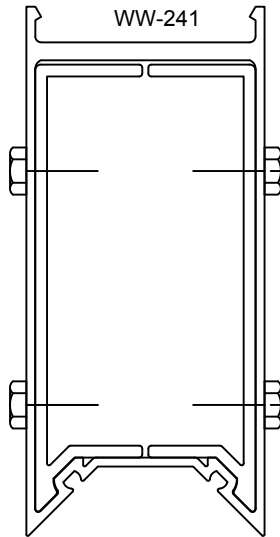
WW-240



WW-230



WW-241



6" SYSTEM DEPTH

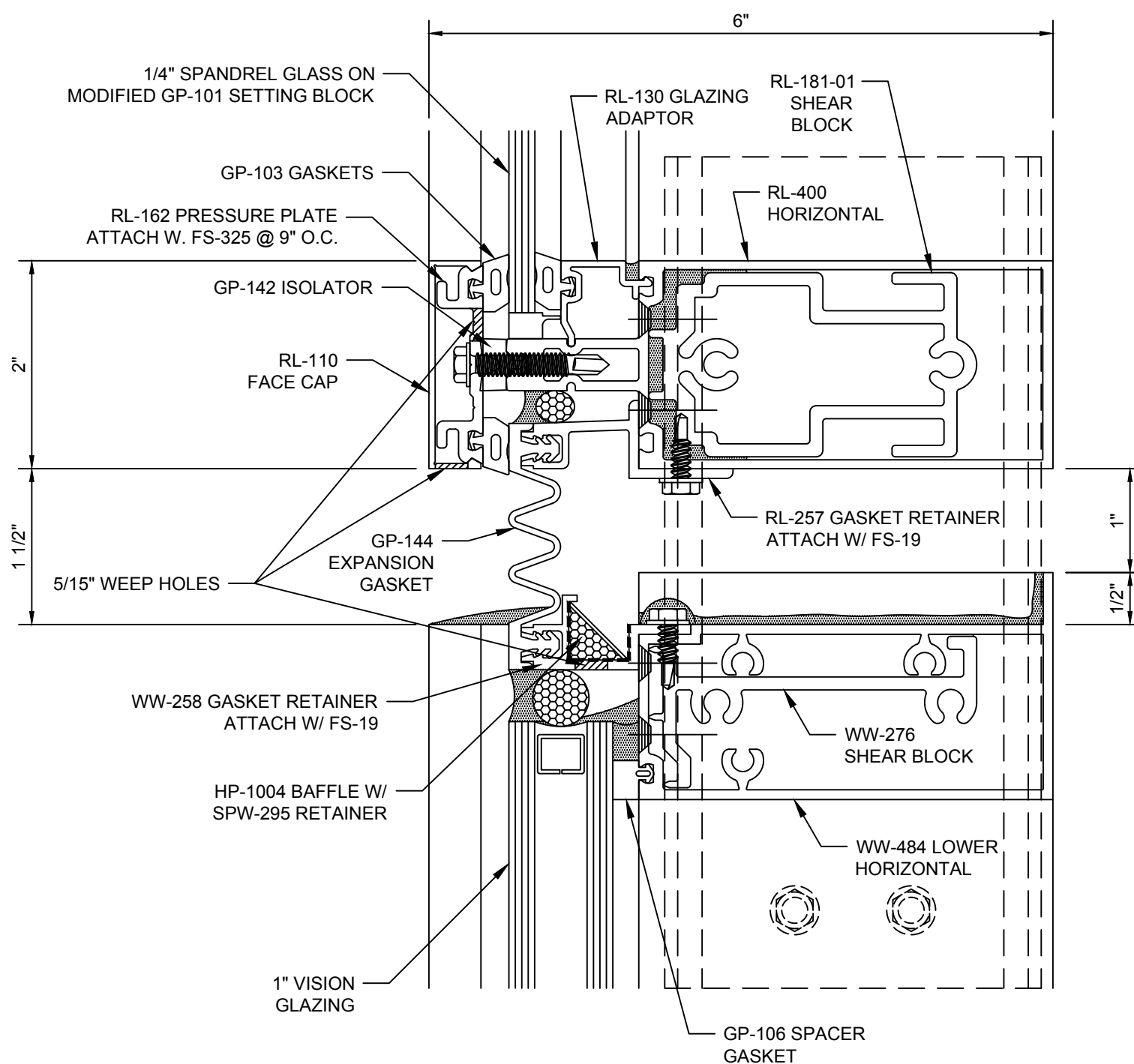
MULLION	SPLICE
RL-400	RL-192-01
RL-404	RL-193-01
RL-410	RL-193-01
WW-230	WW-190-01
WW-240	WW-191-01
WW-241	WW-202-01

7-1/4" SYSTEM DEPTH

MULLION	SPLICE
RL-500	RL-194-01
RL-504	RL-195-01
RL-510	RL-195-01
WW-230	WW-190-01
WW-240	WW-191-01
WW-241	WW-202-01

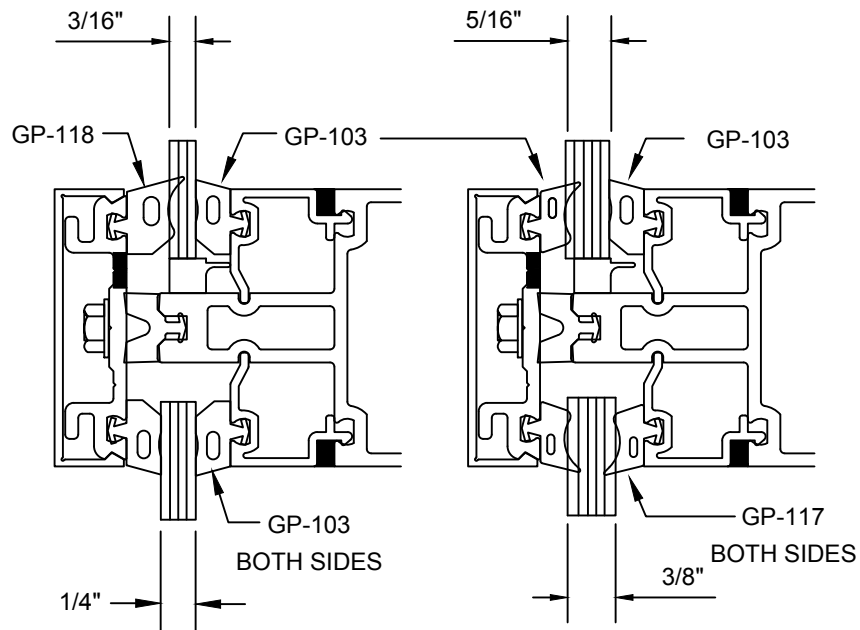
REFERENCE INSTALLATION MANUAL FOR ADDITIONAL SPLICE INFO.

## Reliance™-LT Mullion Splices - H5043

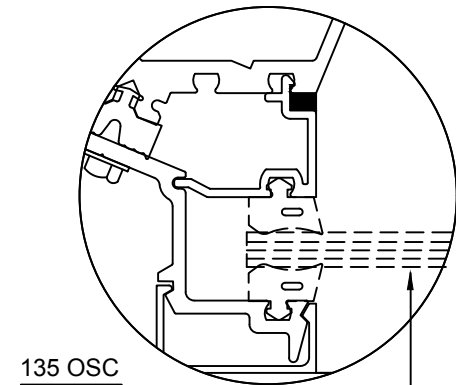


## Reliance™-LT

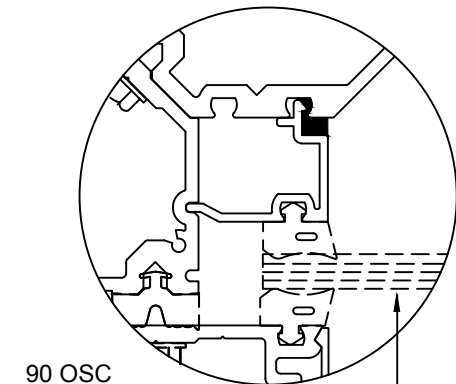
### Expansion Horizontal - H5044



Glass Chart			
Glass	Gasket Exterior	Gasket Interior	Glazing Adapter
0.1875"	GP-118	GP-103	RL-130
0.250"	GP-103	GP-103	RL-130
0.3125"	GP-117	GP-103	RL-130
0.375"	GP-117	GP-117	RL-130



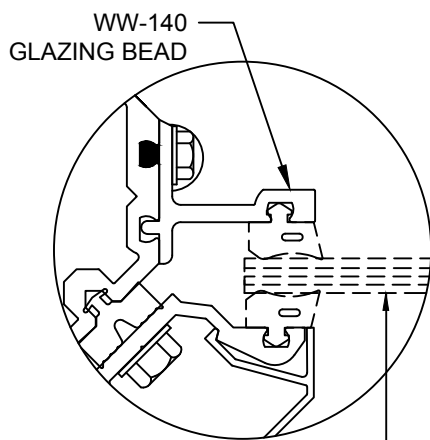
135 OSC  
See Glass Chart



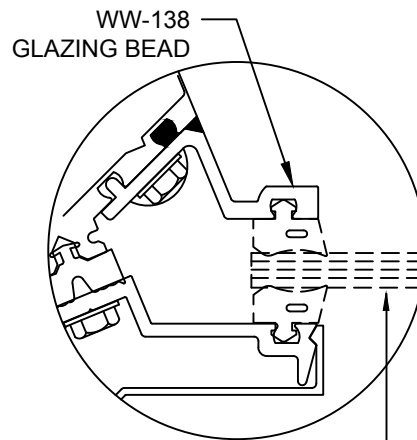
90 OSC  
See Glass Chart

#### NOTE:

1. GP-101 (modified) setting block (Typical)
2. Glass pocket with adaptor = 3/4"
3. Adaptors/glazing beads set in sealant (Sealant by Others)



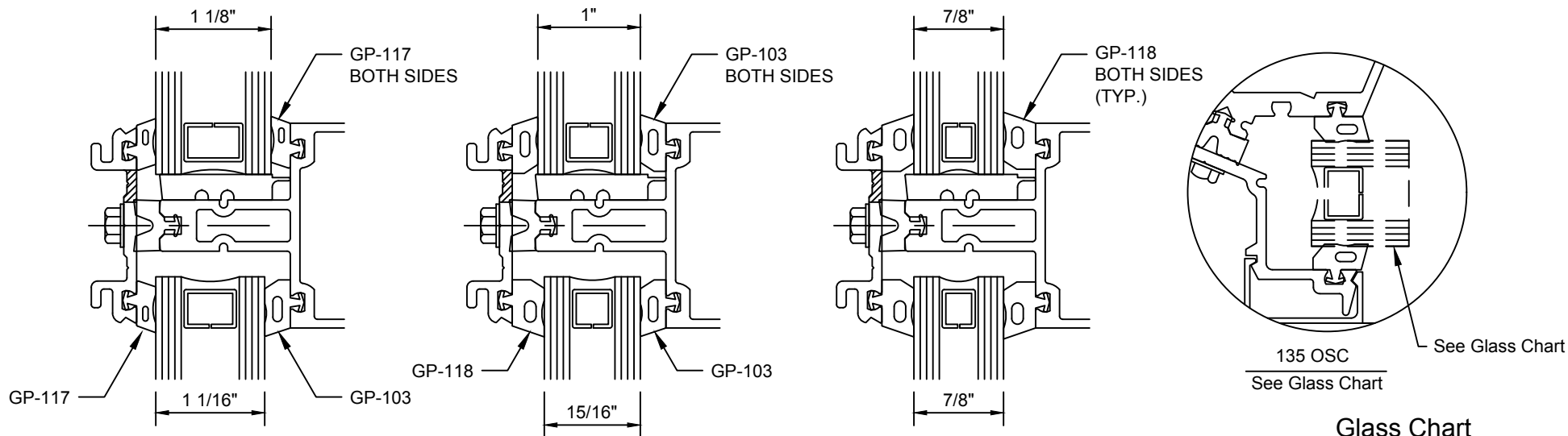
90 ISC  
SEE NOTE 5



135 ISC  
SEE NOTE 5

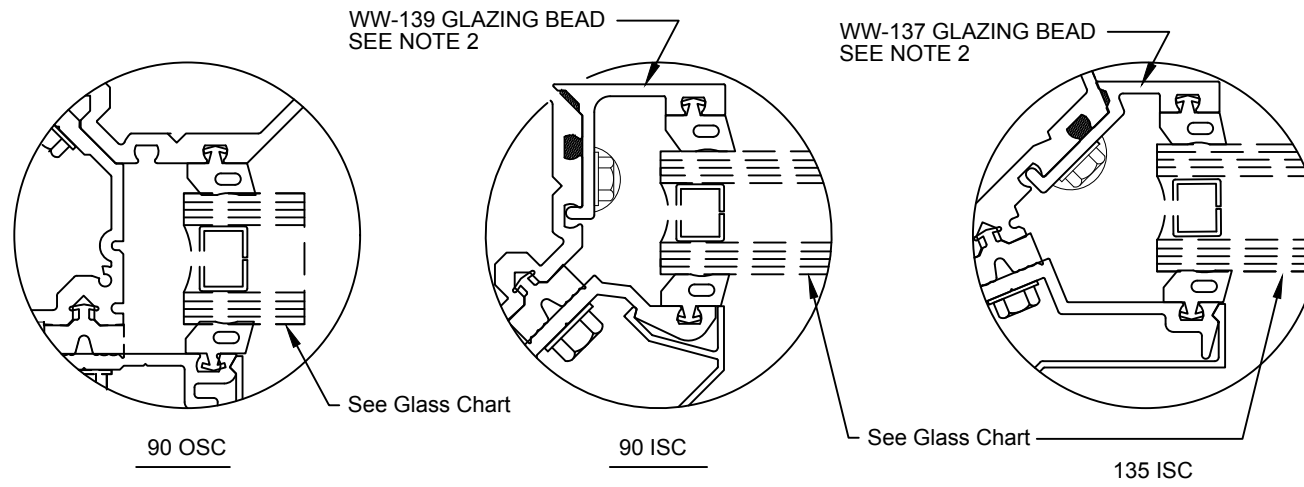
## Reliance™-LT Glazing Adaptors and Spandrel Glass Options - H5046





Glass Chart

Glass Size	Gasket Exterior	Gasket Interior
0.875"	GP-118	GP-118
0.9375"	GP-118	GP-103
1.00"	GP-103	GP-103
1.0625"	GP-117	GP-103
1.125"	GP-117	GP-117

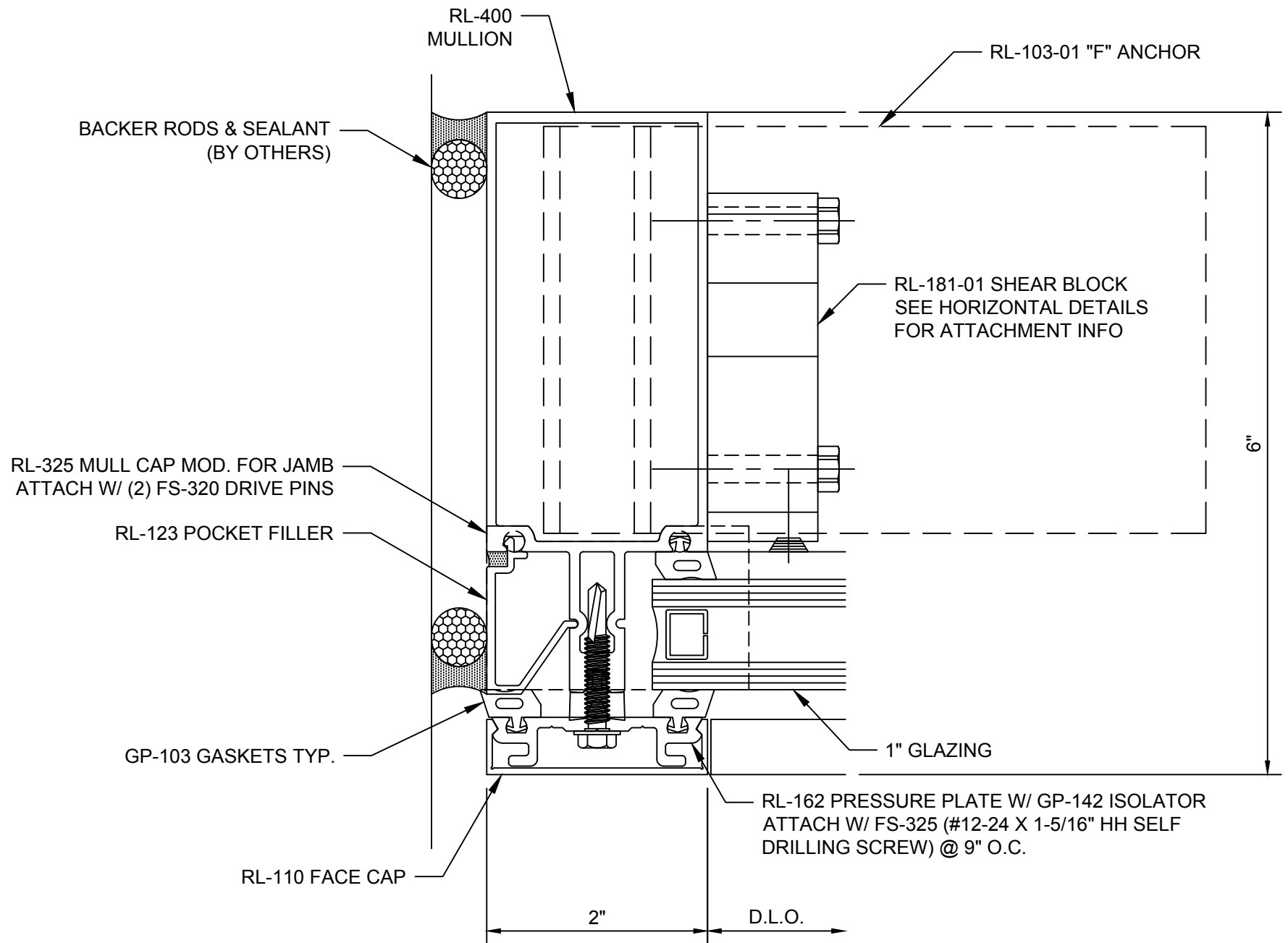


NOTE:

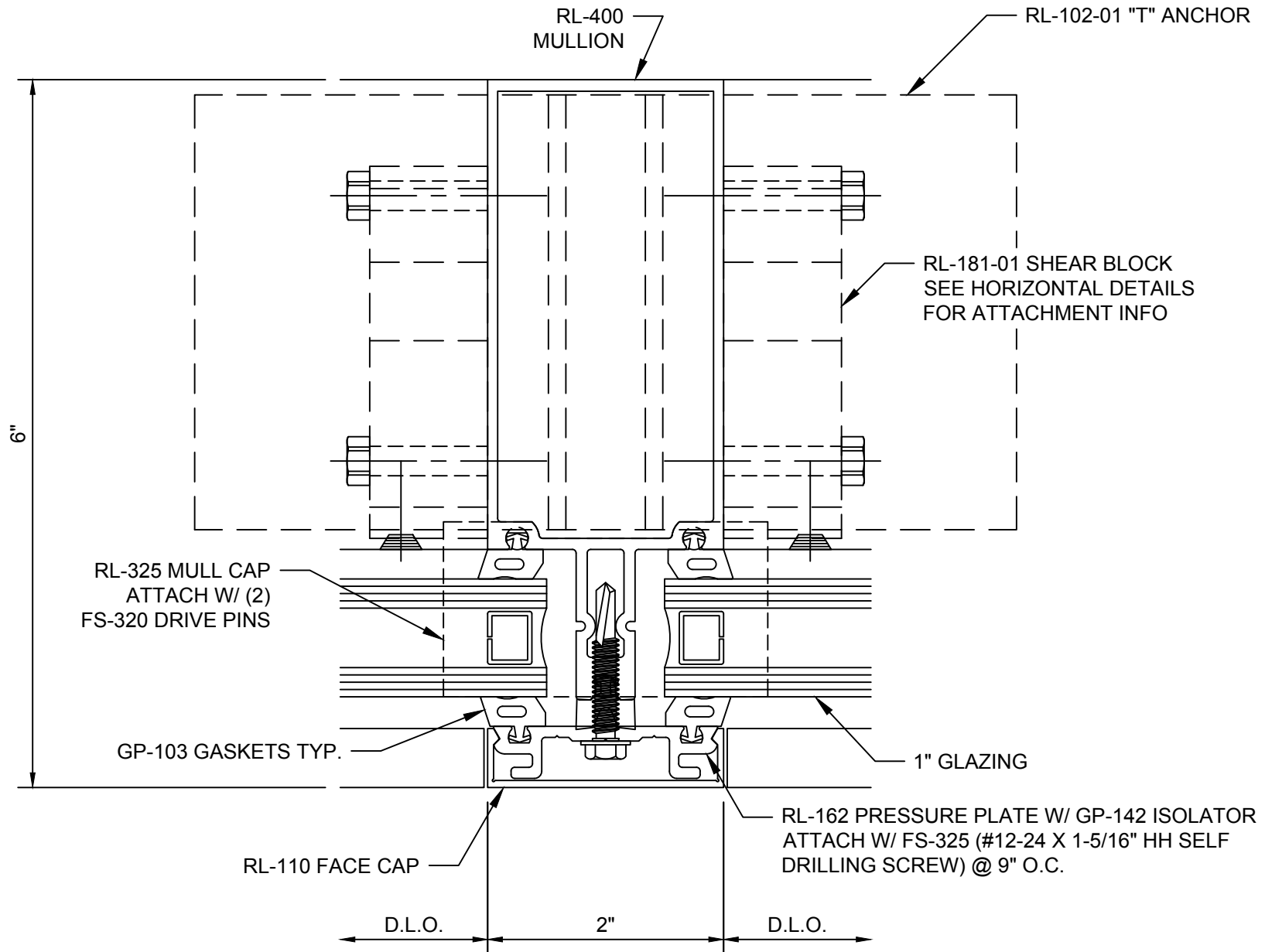
1. Glass Pocket = 1-1/2" (Typical)
2. Glazing beads set in sealant (Sealant by others)

## Reliance™-LT

### Glazing Adaptors and Vision Glass Options - H5048

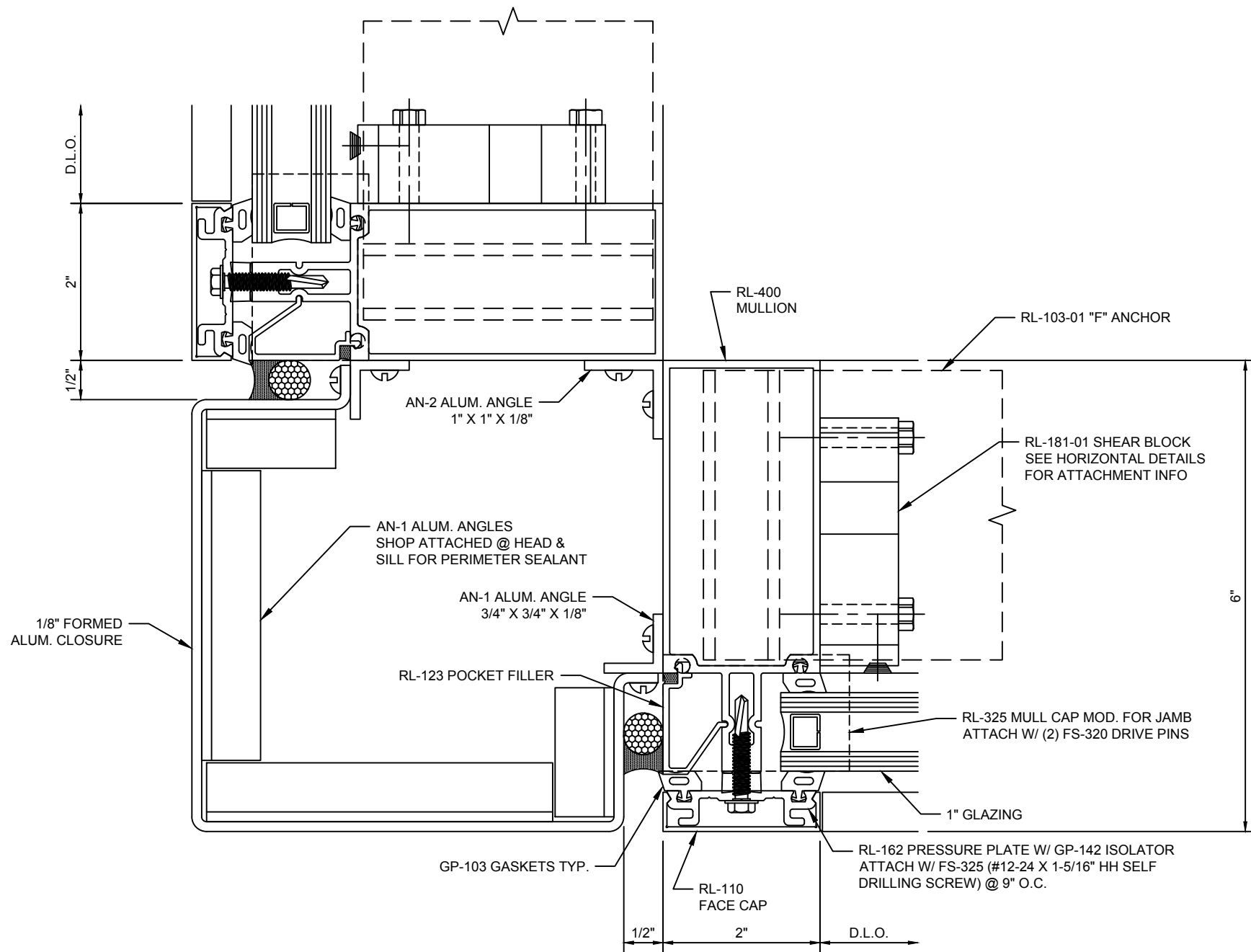


**Reliance™-LT**  
**Jamb Vertical - V5001**



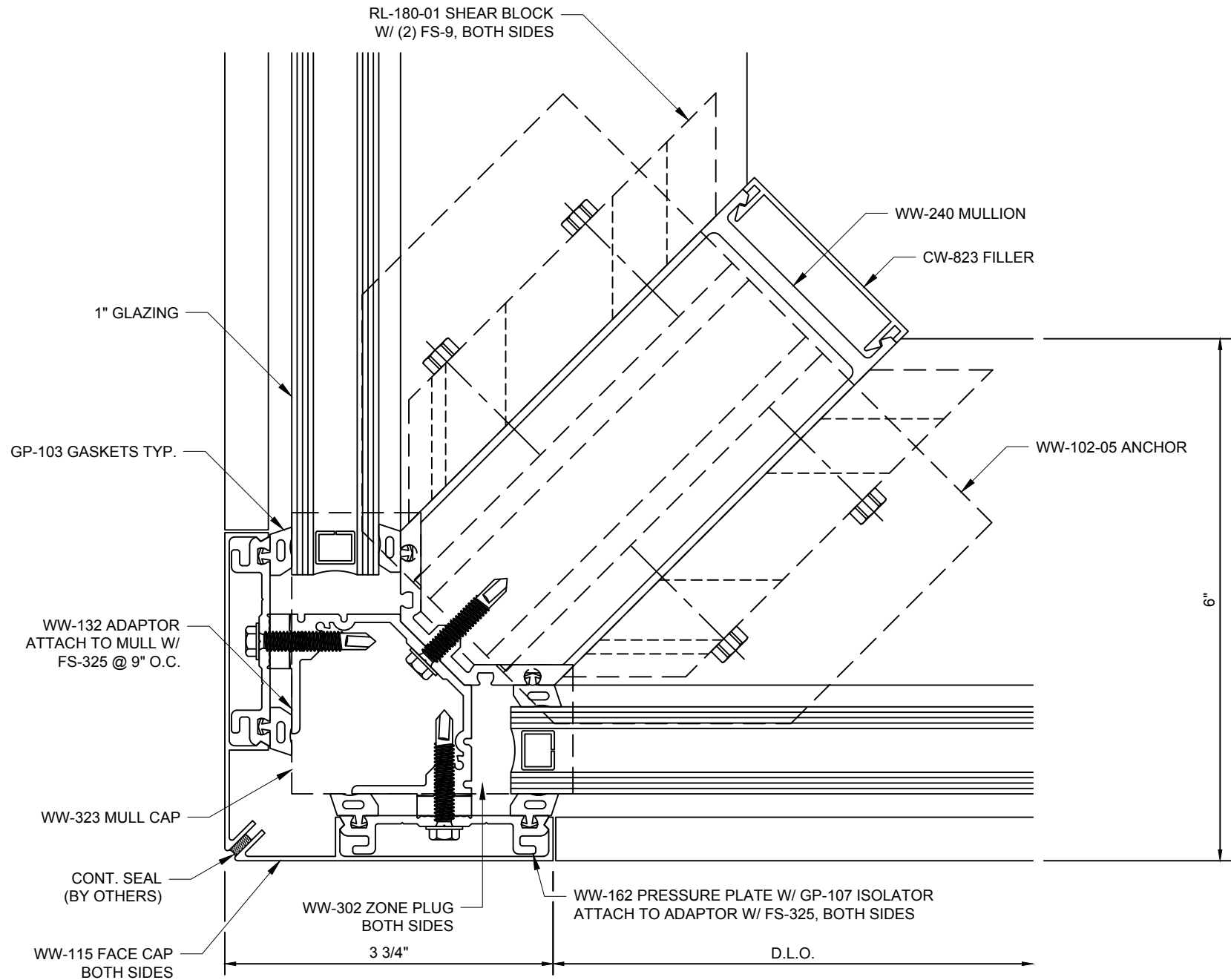
**Reliance™-LT**  
**Vertical Mullion - V5002**





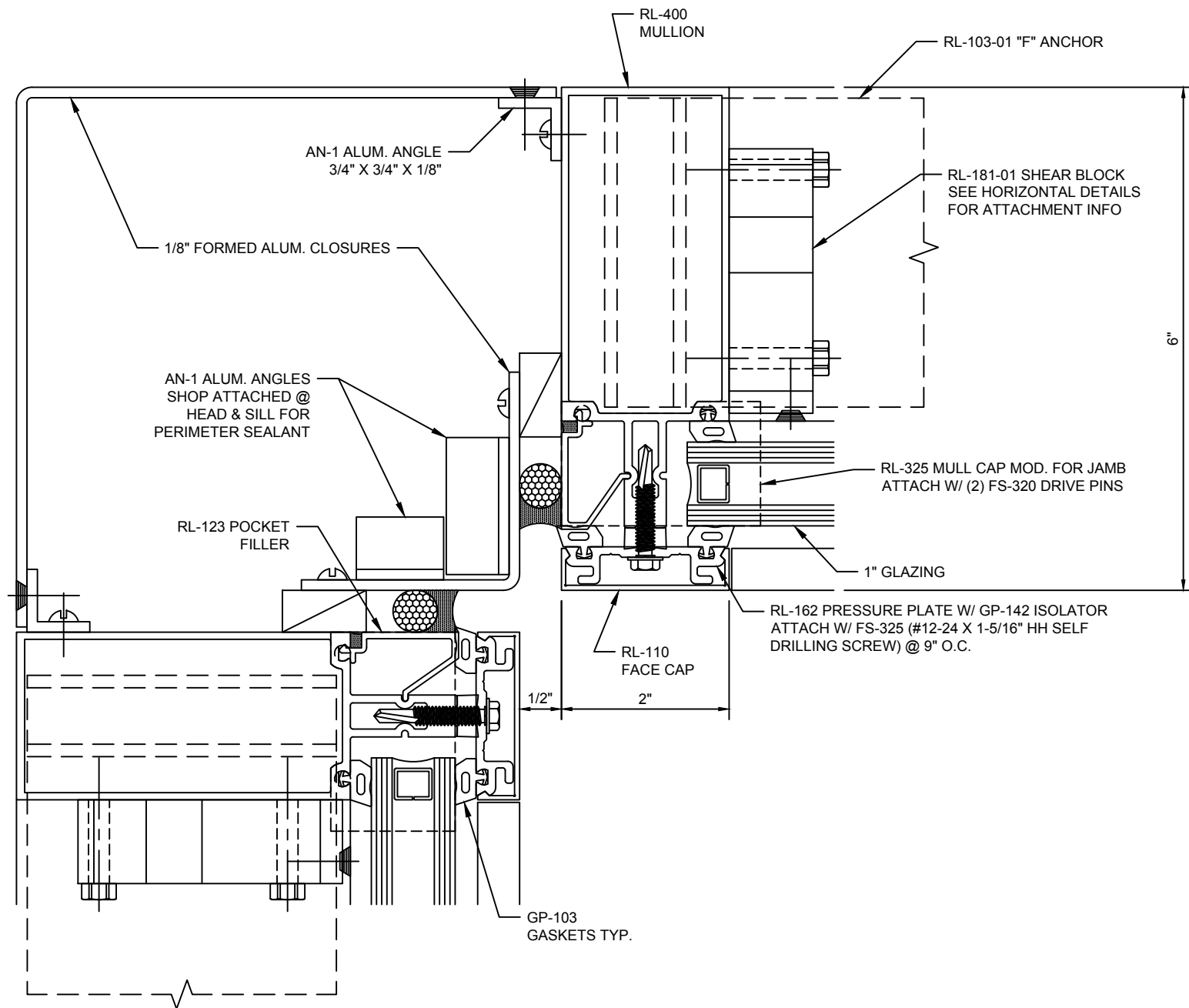
## Reliance™-LT

### 90° Outside Corner - V5015

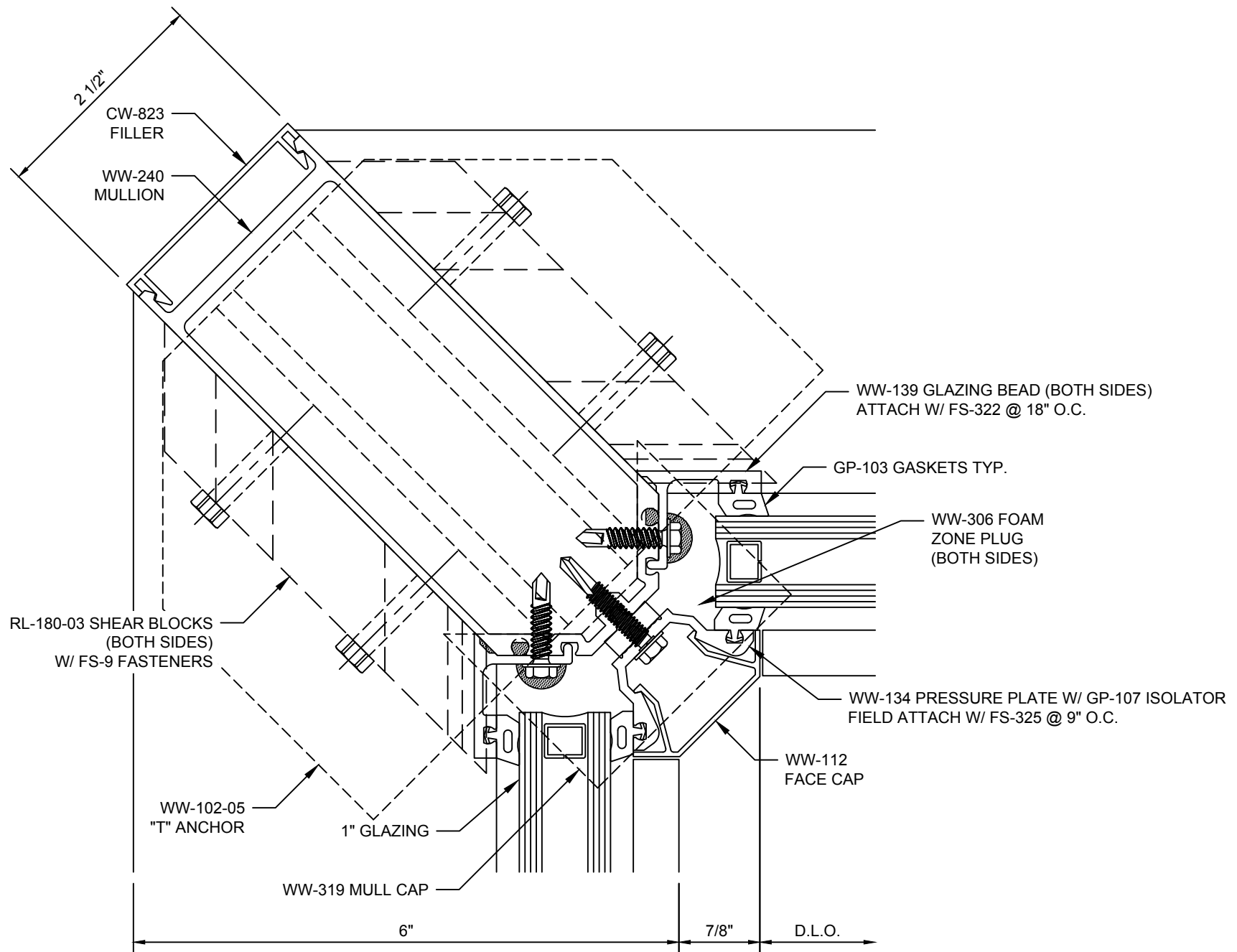


## Reliance™-LT

### 90° Outside Corner - V5016

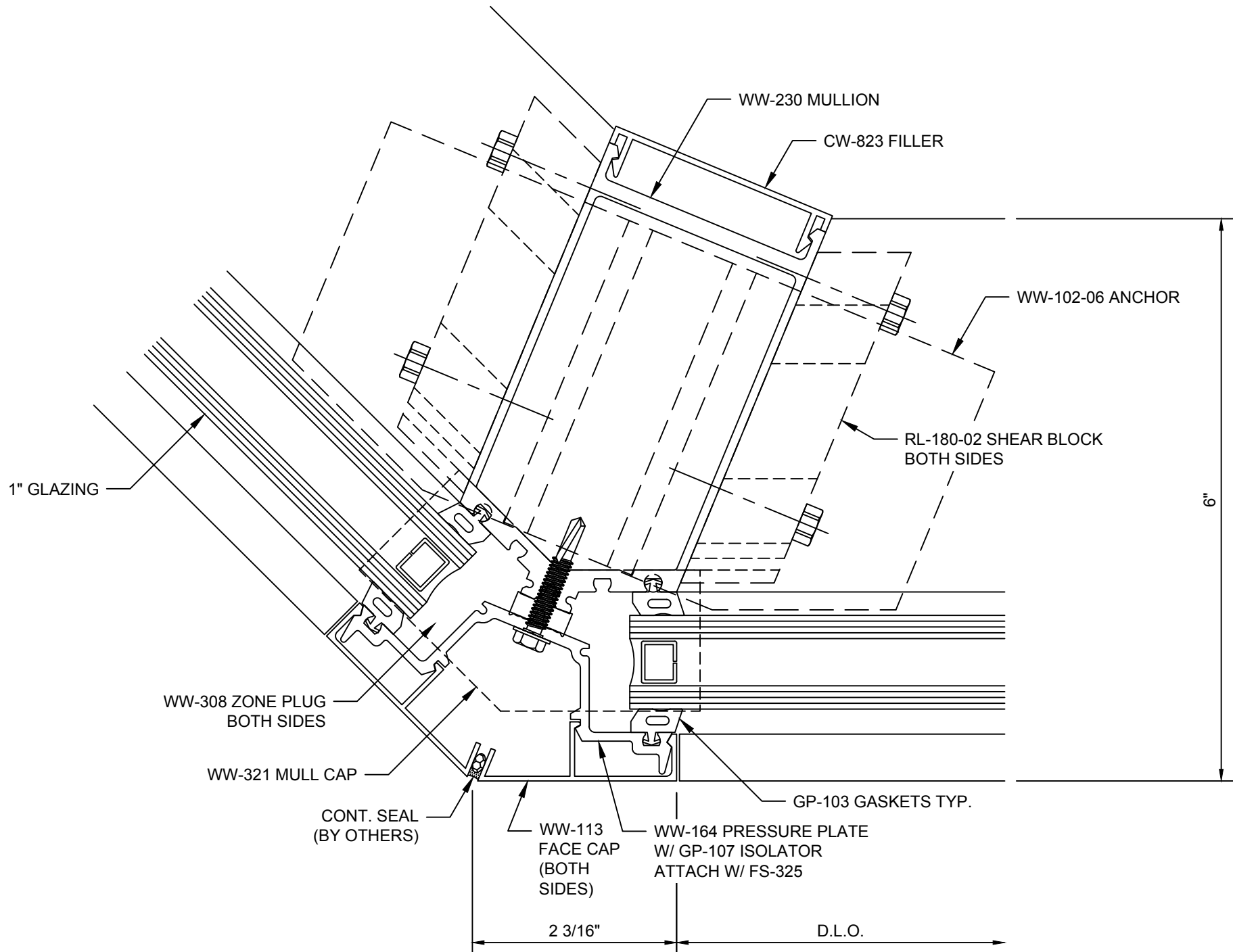


**Reliance™-LT**  
**90° Inside Corner - V5017**

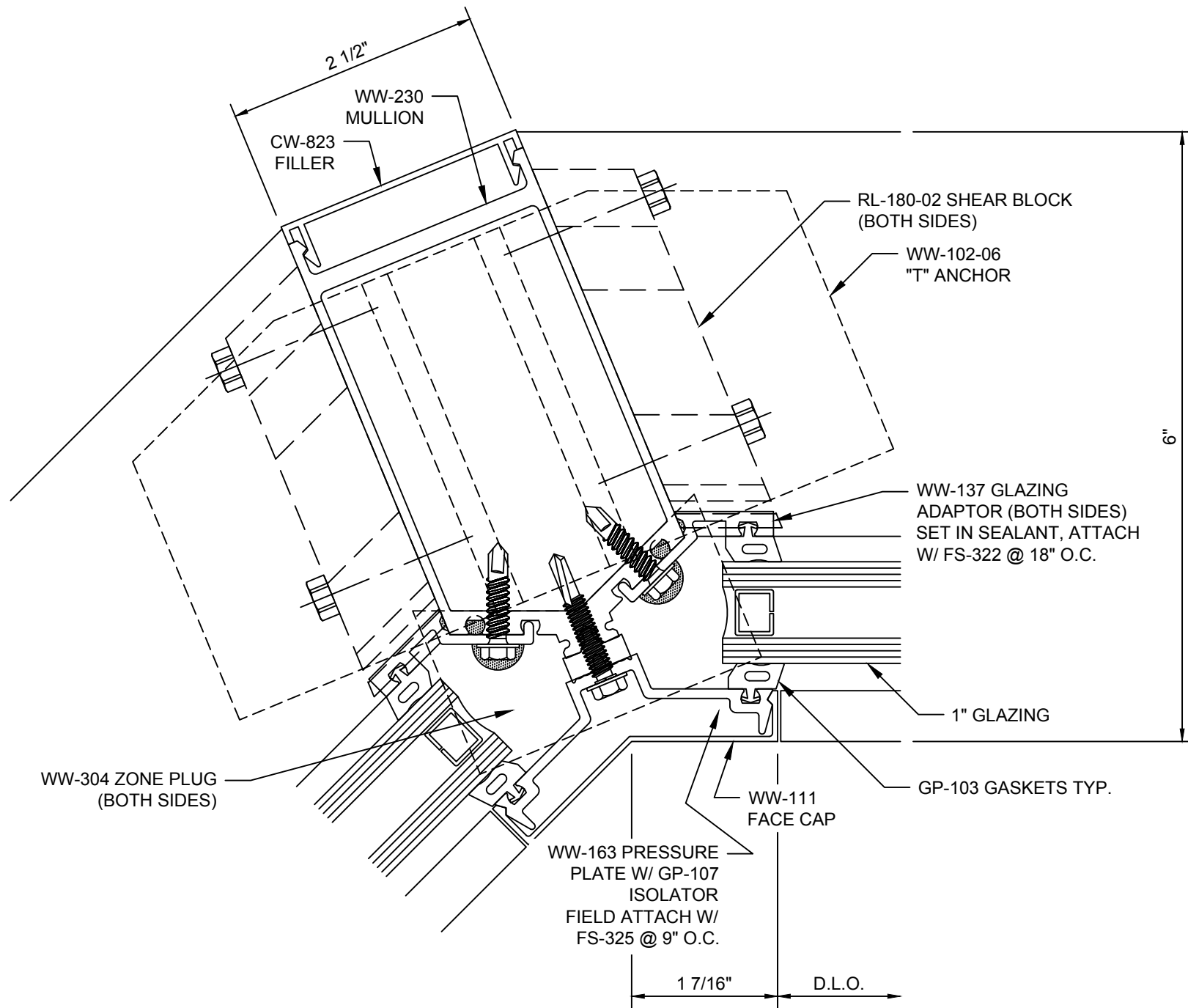


**Reliance™-LT**  
**90° Inside Corner at Vision - V5018**

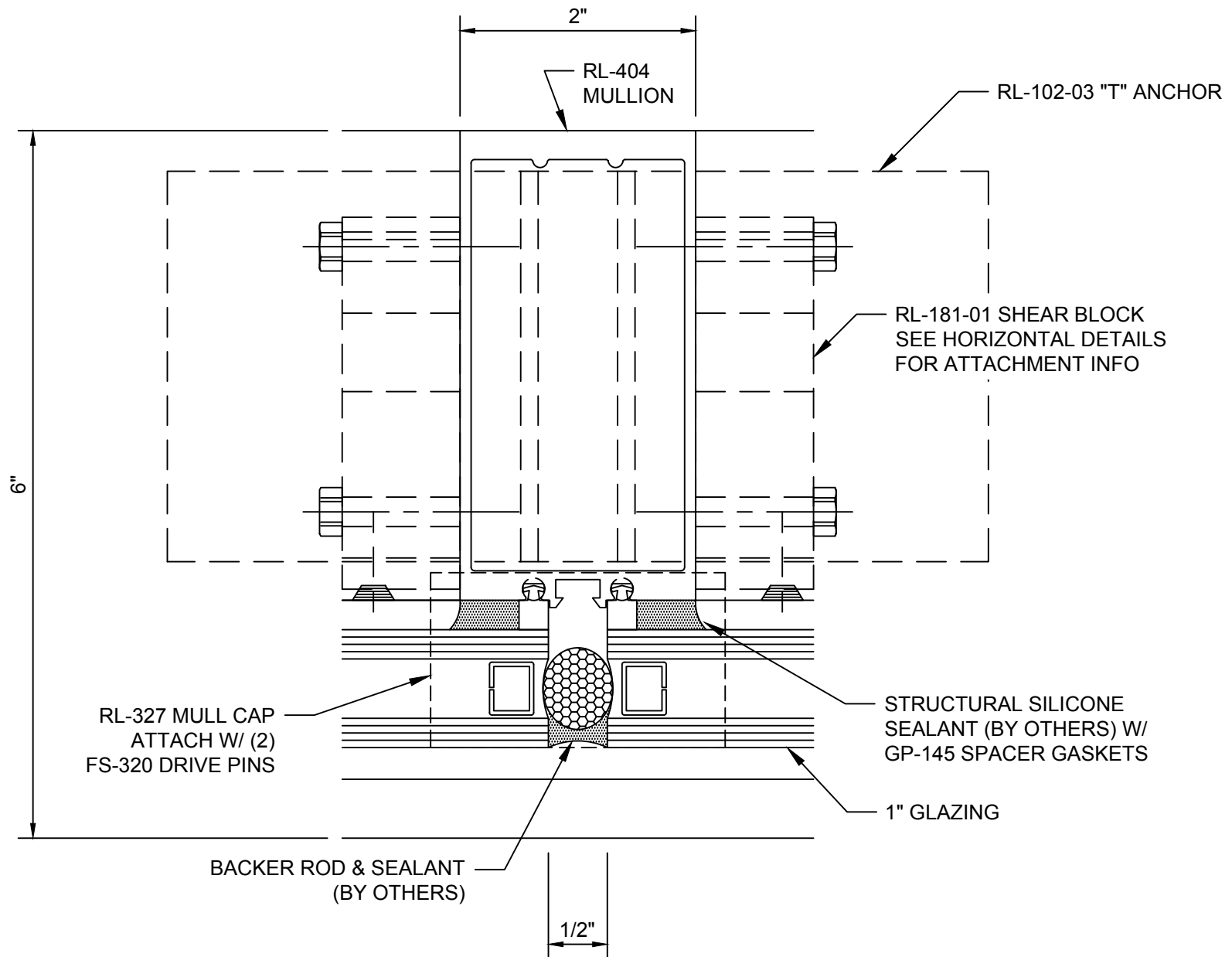




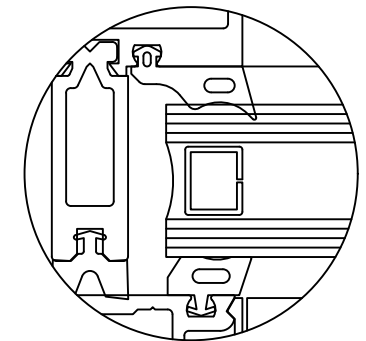
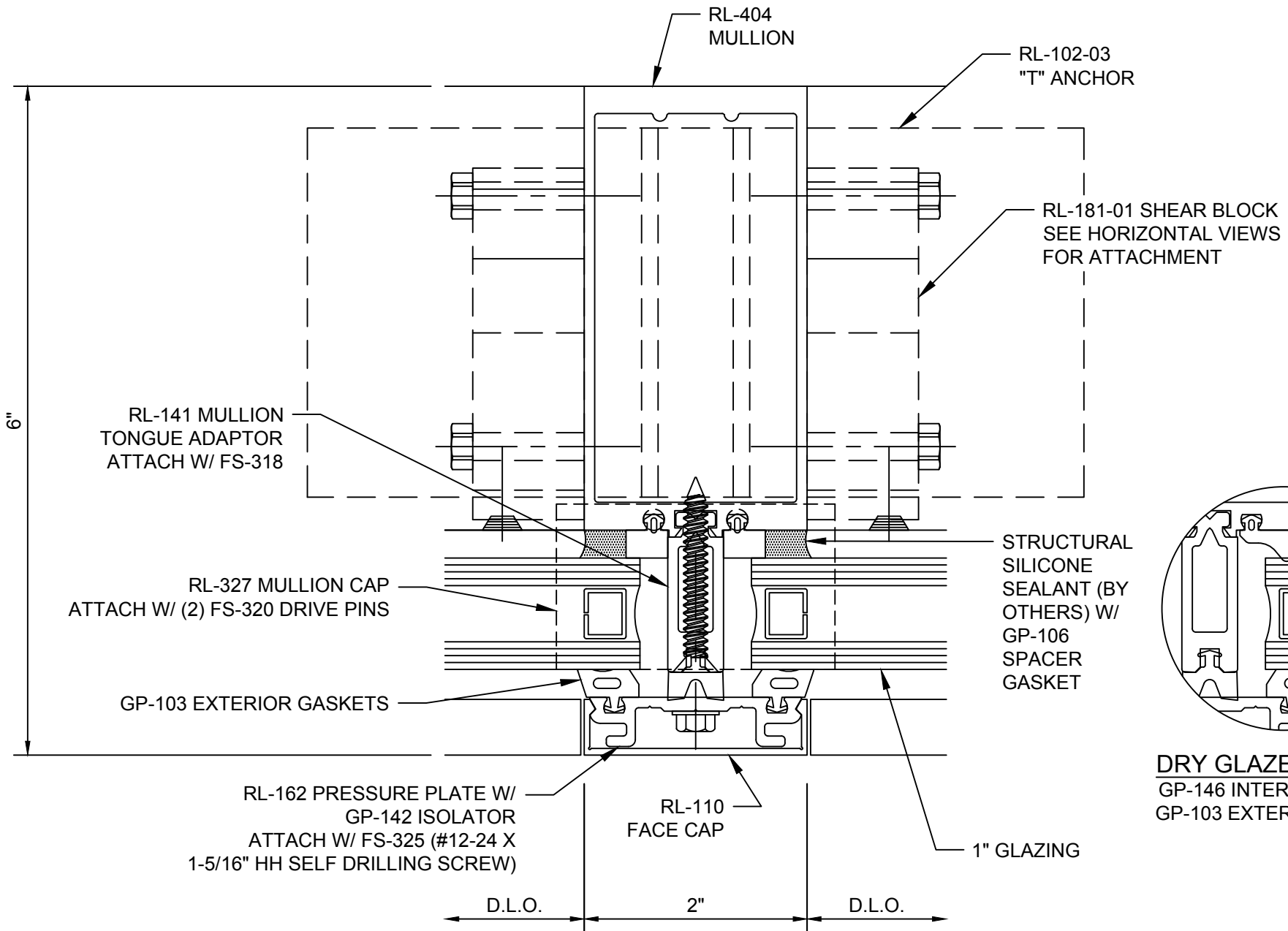
**Reliance™-LT**  
**135° Outside Corner - V5019**



## Reliance™-LT 135° Inside Corner at Vision - V5020

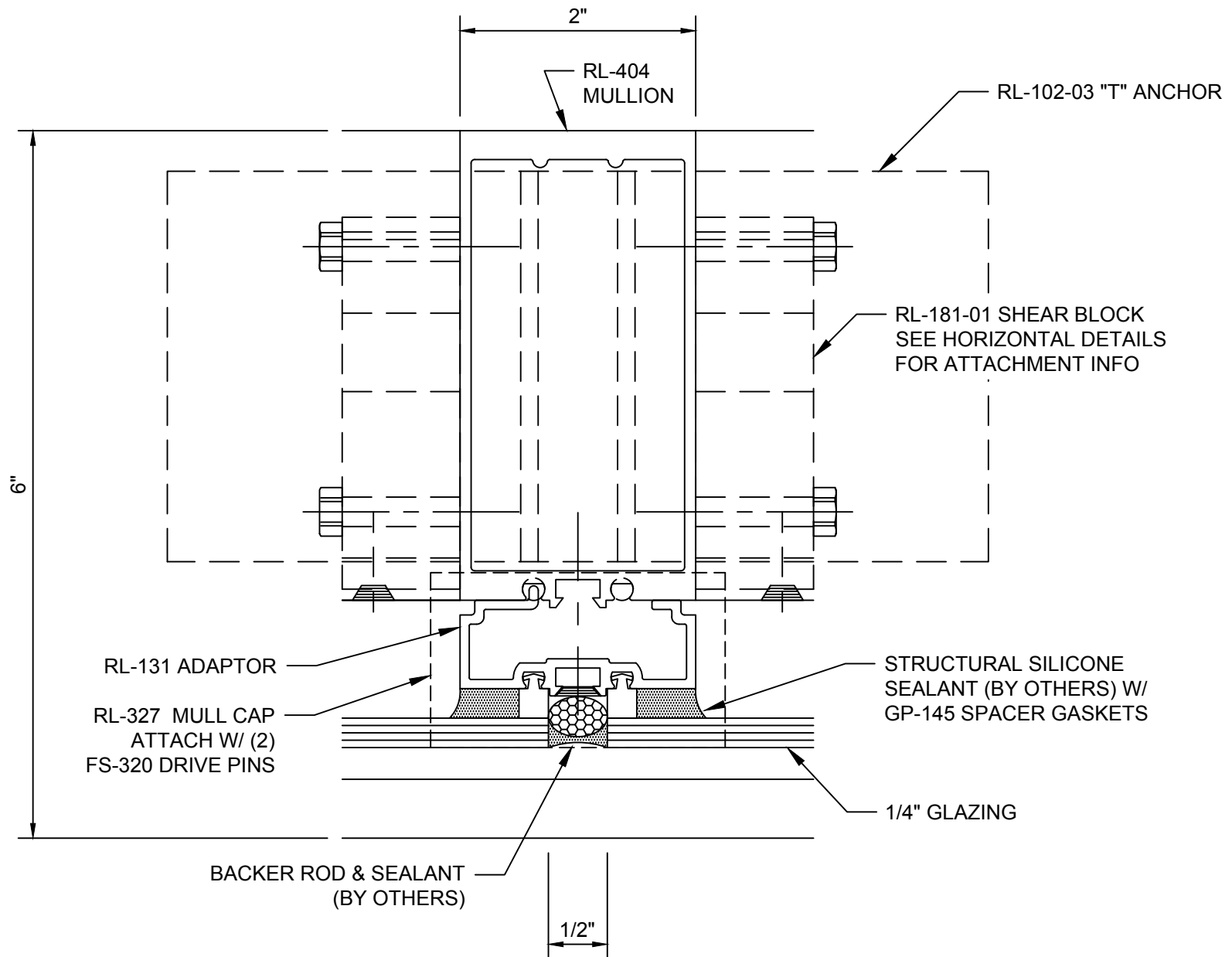


**Reliance™-LT**  
**SSG Vertical Mullion - V5022**

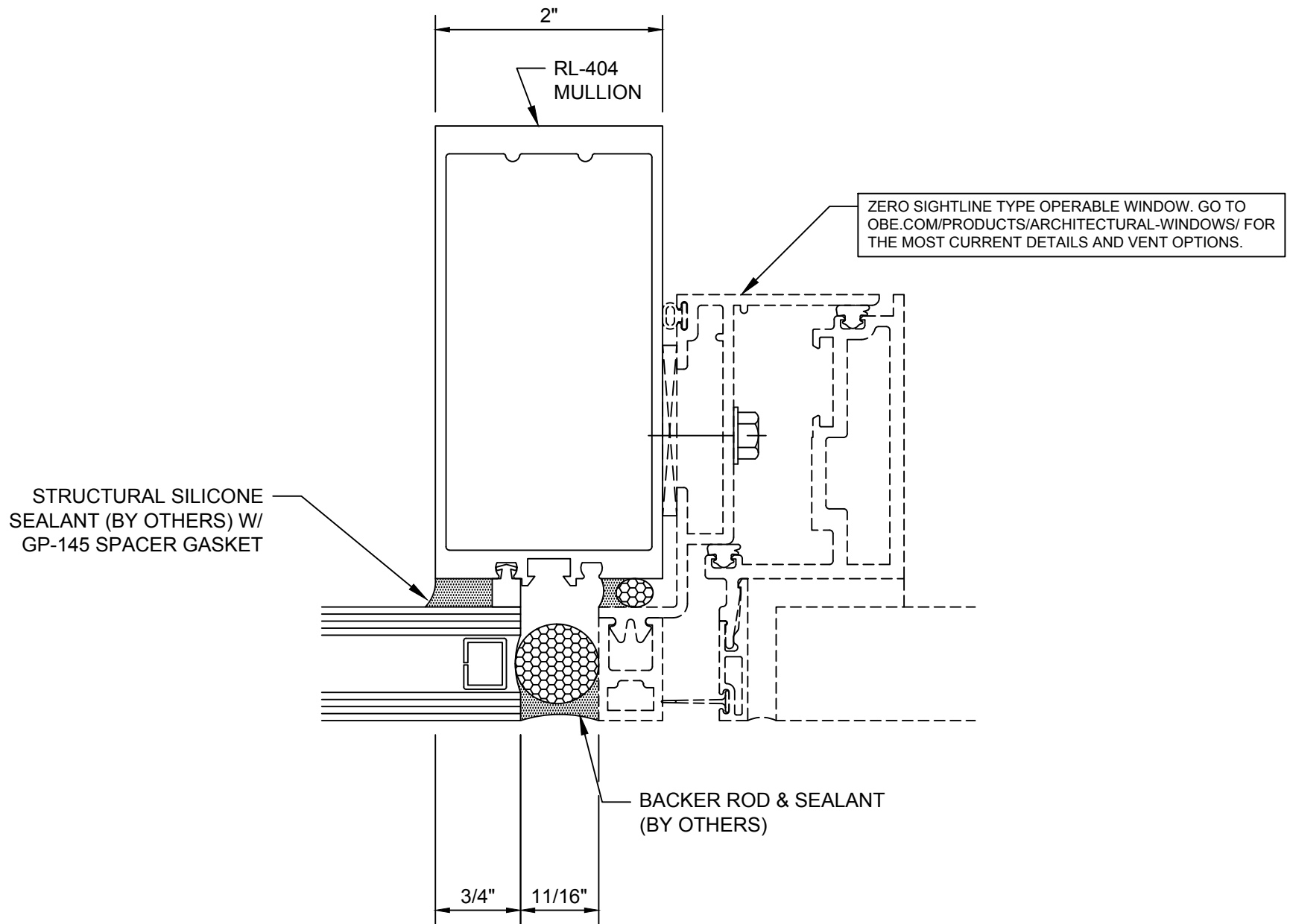


**DRY GLAZED OPTION**  
GP-146 INTERIOR GASKET  
GP-103 EXTERIOR GASKET

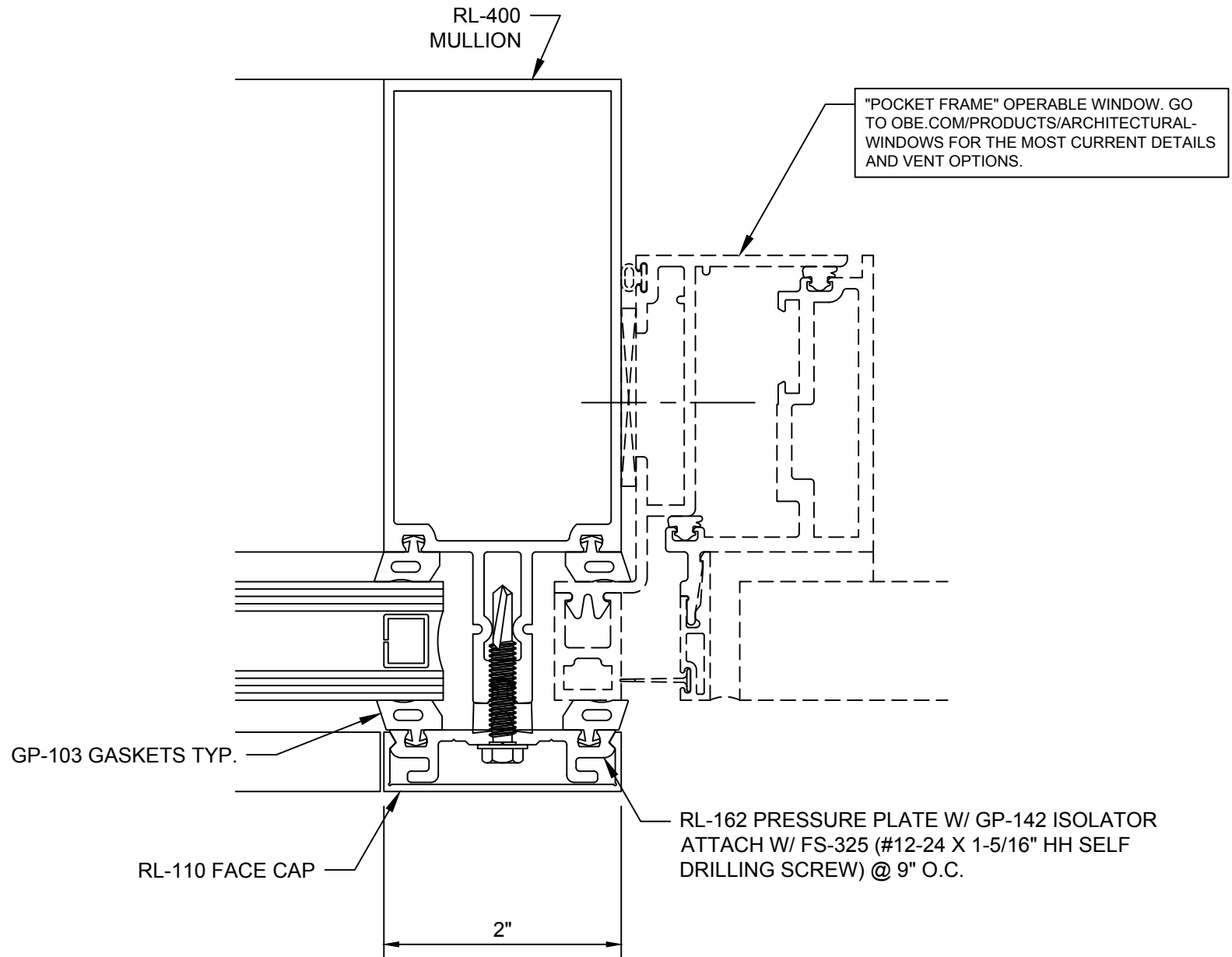
## Reliance™-LT SSG Vertical Mullion - V5023



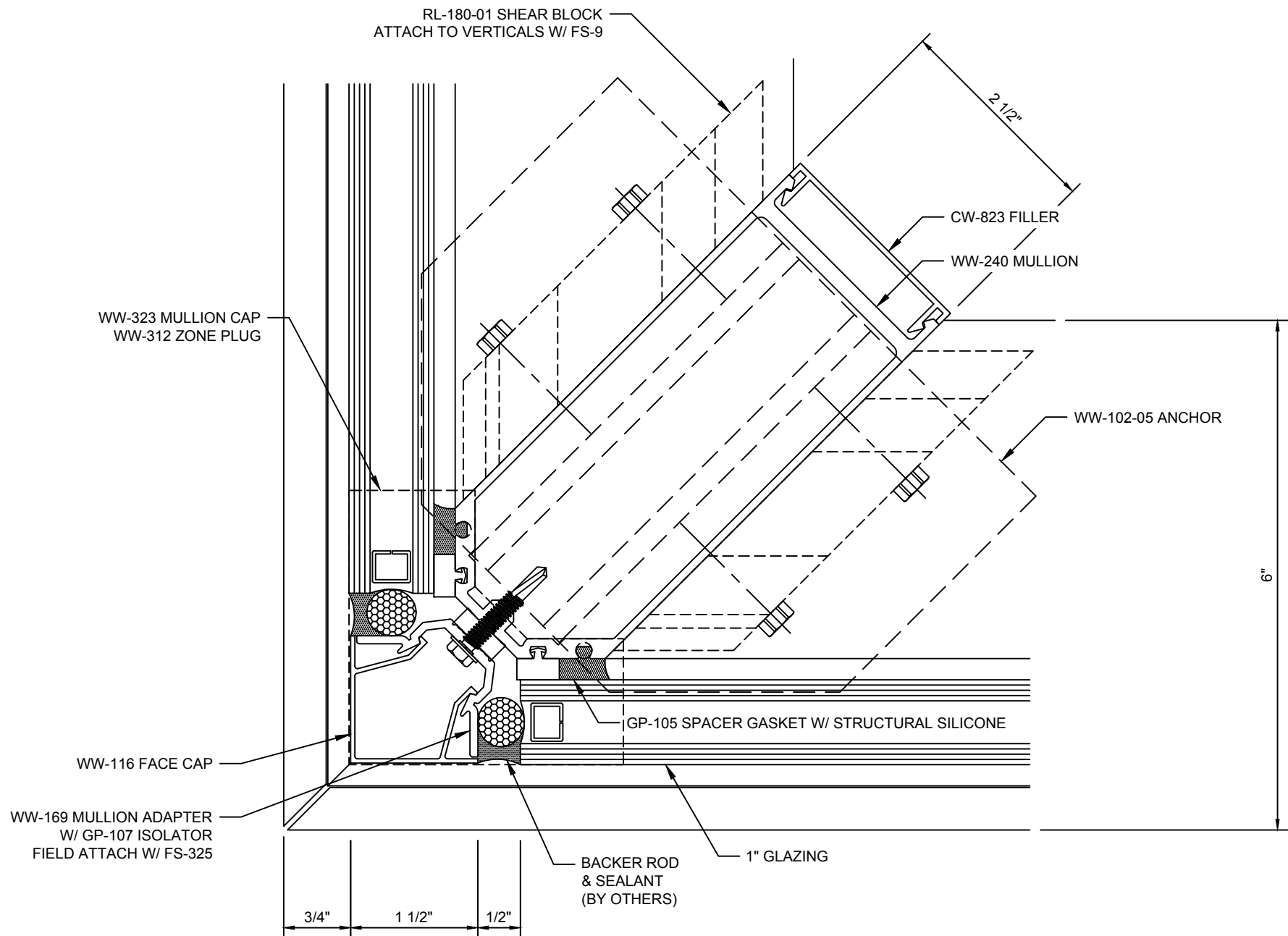
## Reliance™-LT SSG Vertical Mullion - V5027



**Reliance™-LT**  
**SSG Vertical Mullion at Operable Window - V5029**



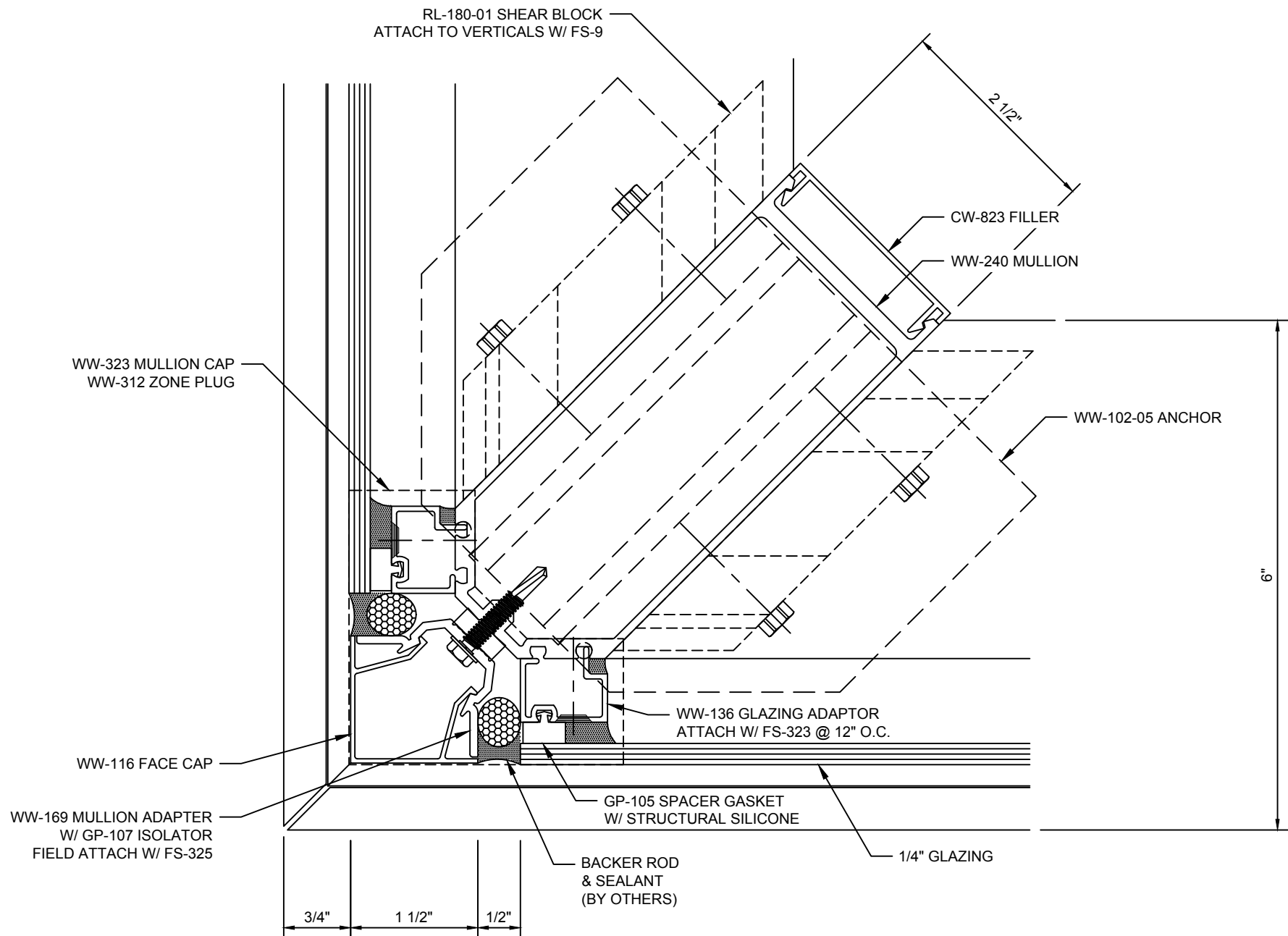
**Reliance™-LT**  
**Mullion at Operable Window - V5030**



## Reliance™-LT

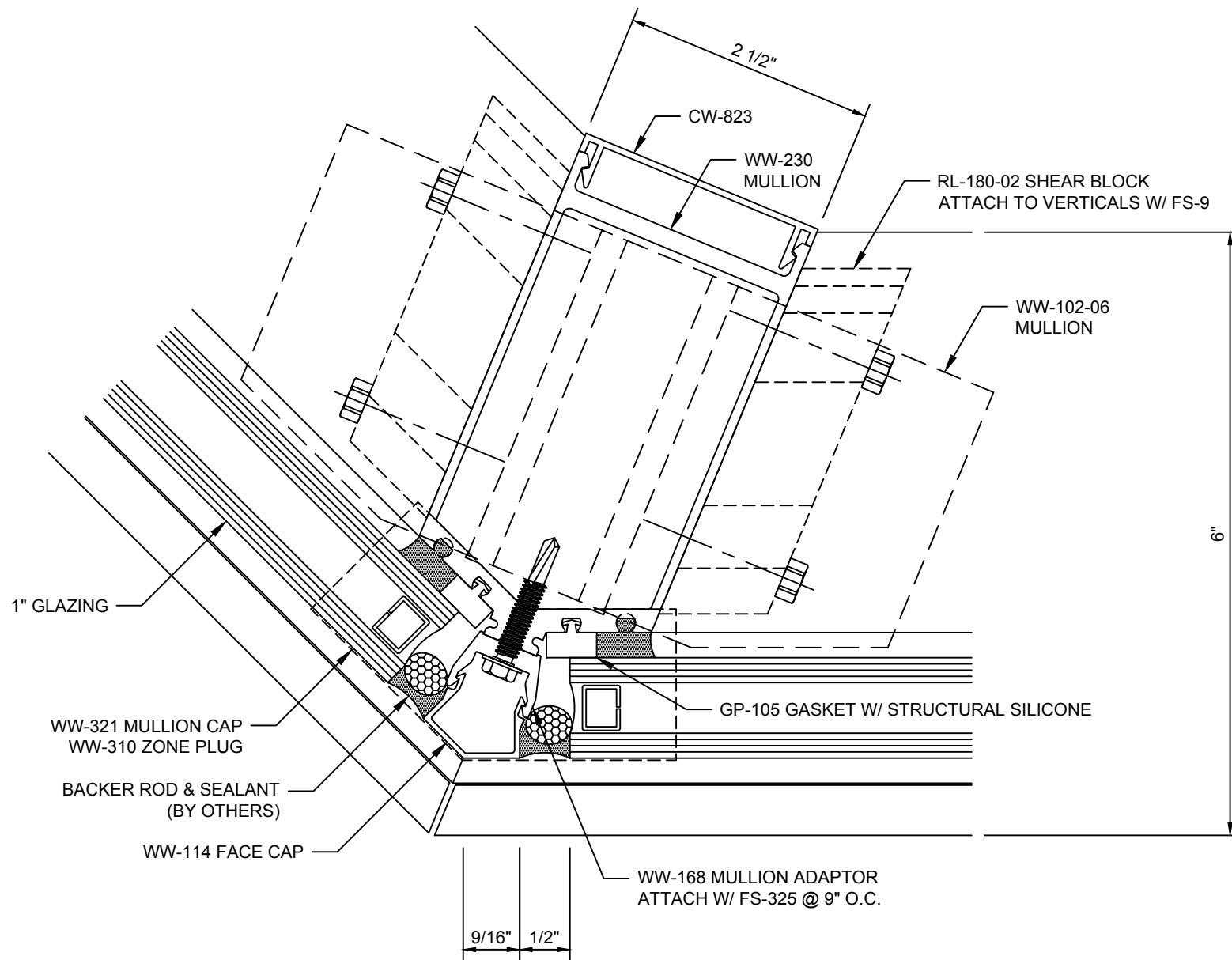
### 90° SSG Corner at Vision - V5031





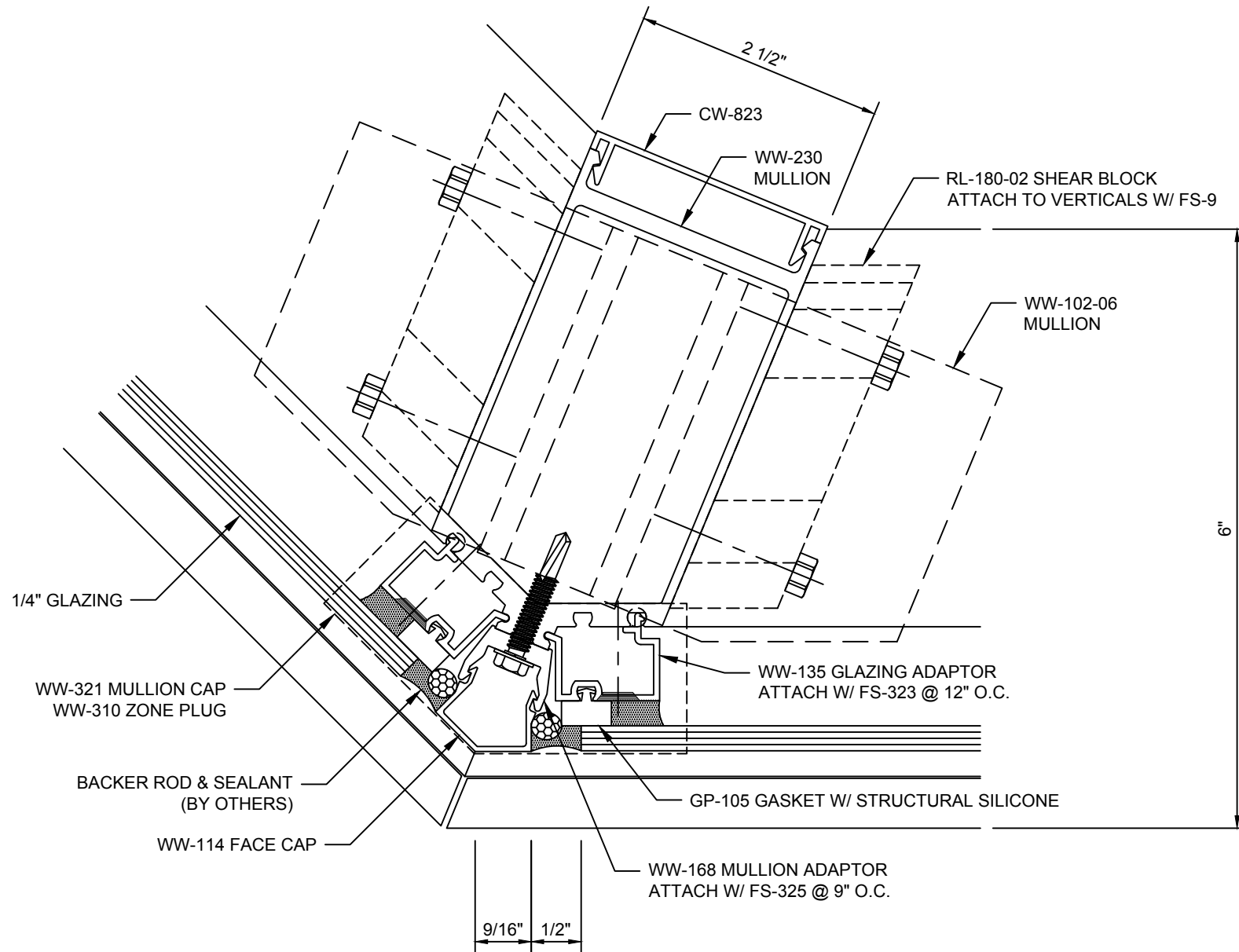
## Reliance™-LT

### 90° SSG Corner at Spandrel - V5032



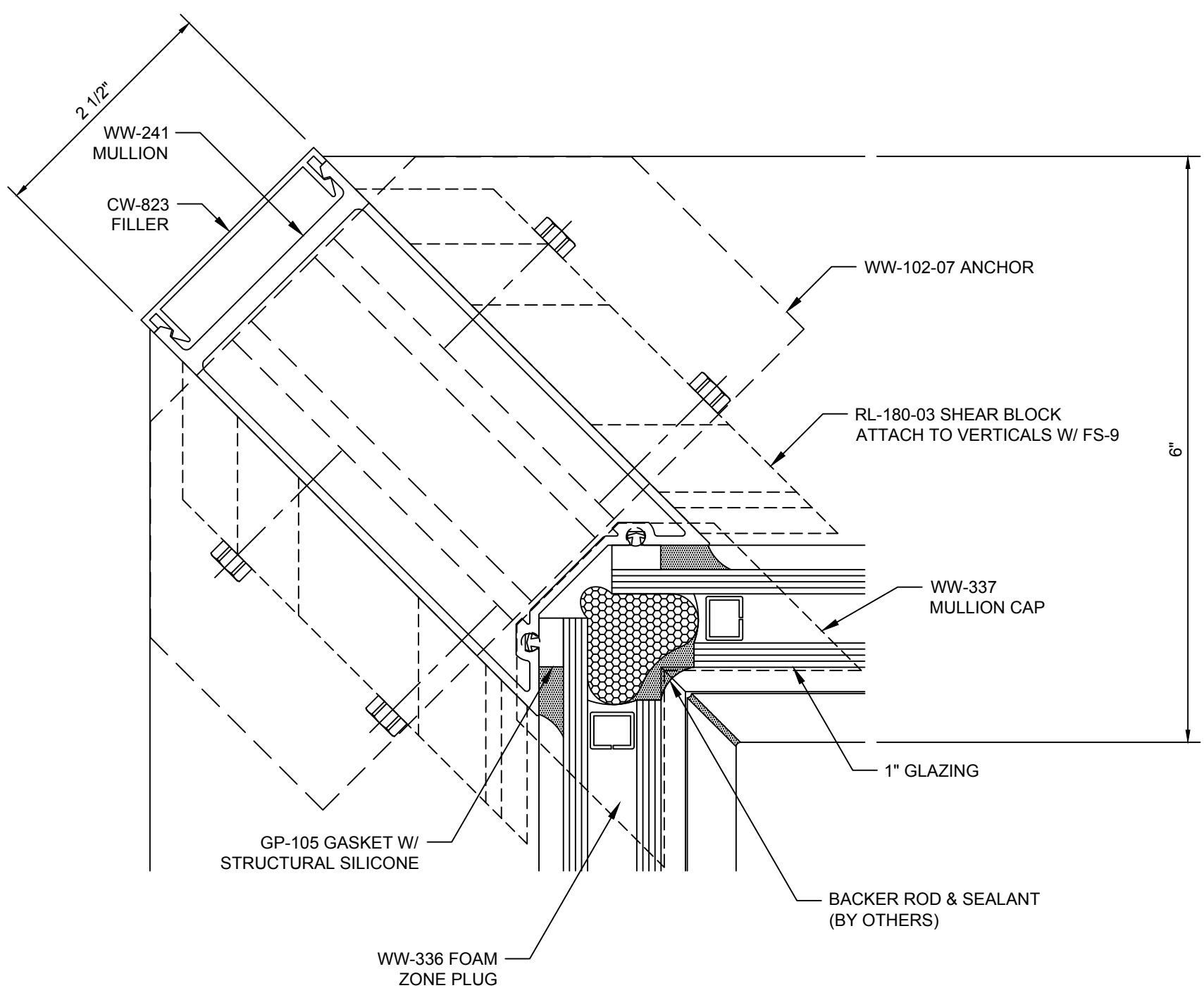
## Reliance™-LT

### 135° SSG Outside Corner at Vision - V5033

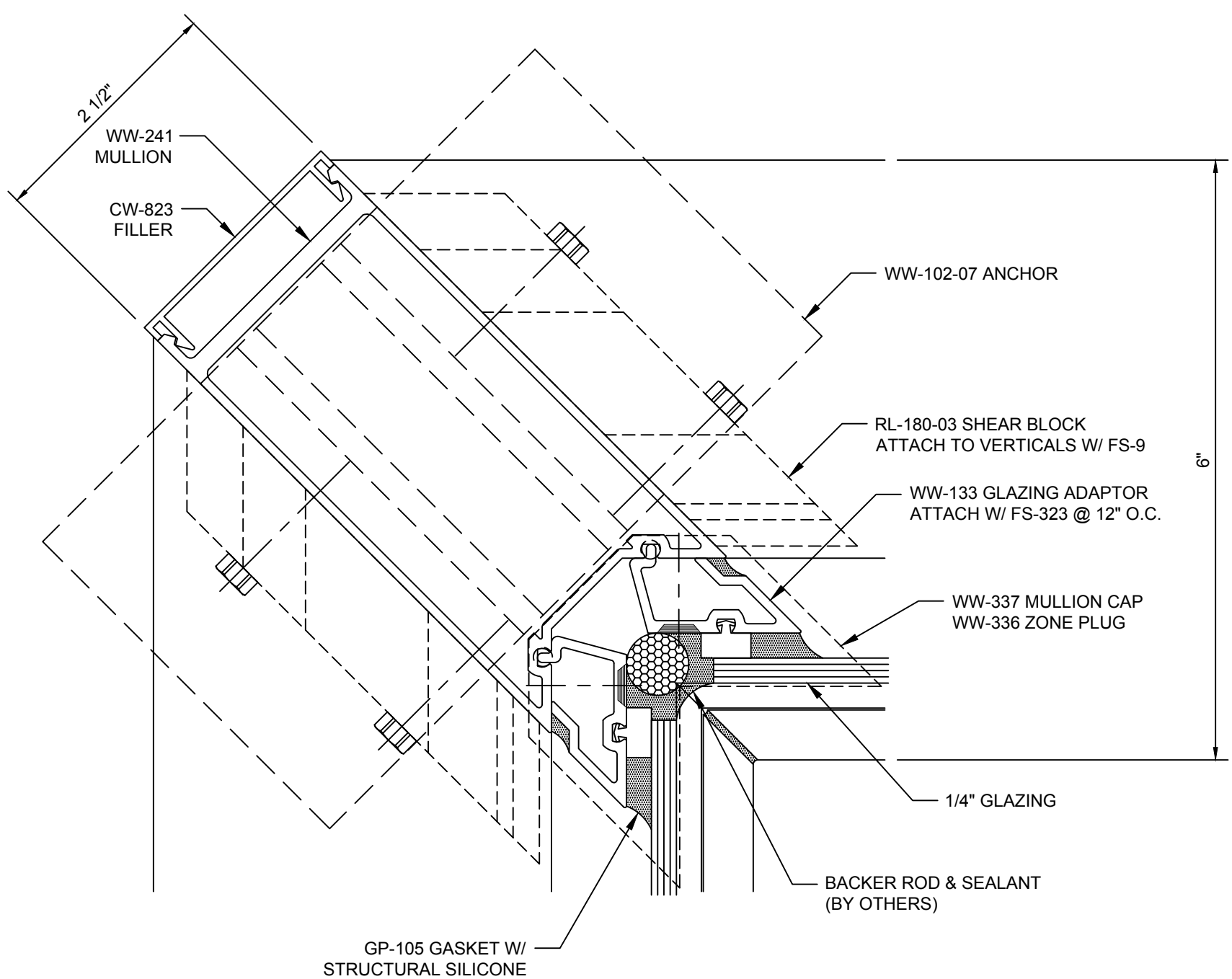


## Reliance™-LT

### 135° SSG Outside Corner at Spandrel - V5034



**Reliance™-LT**  
**90° SSG Inside Corner at Vision - V5035**



**Reliance™-LT**  
**90° SSG Inside Corner at Spandrel - V5036**